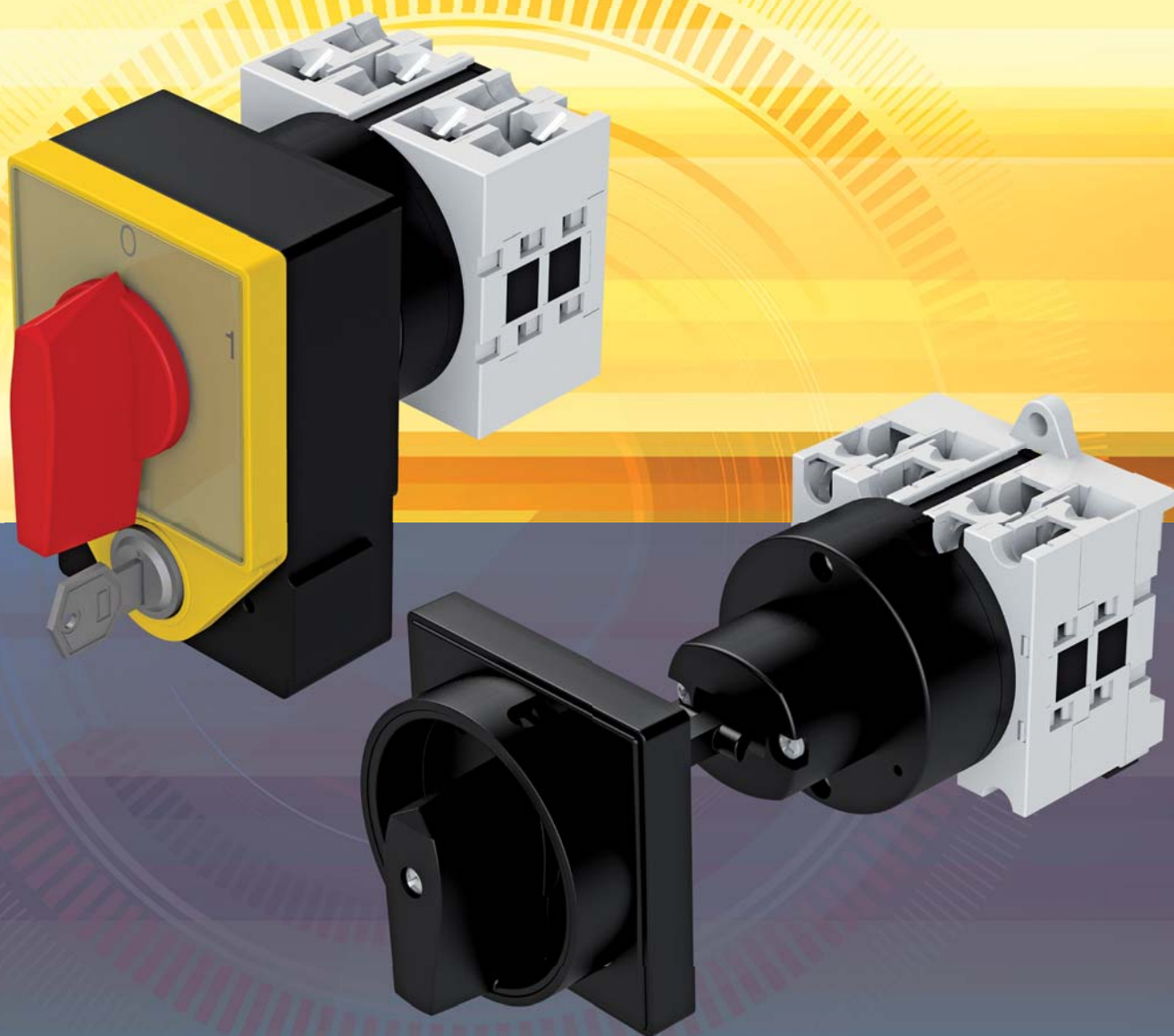
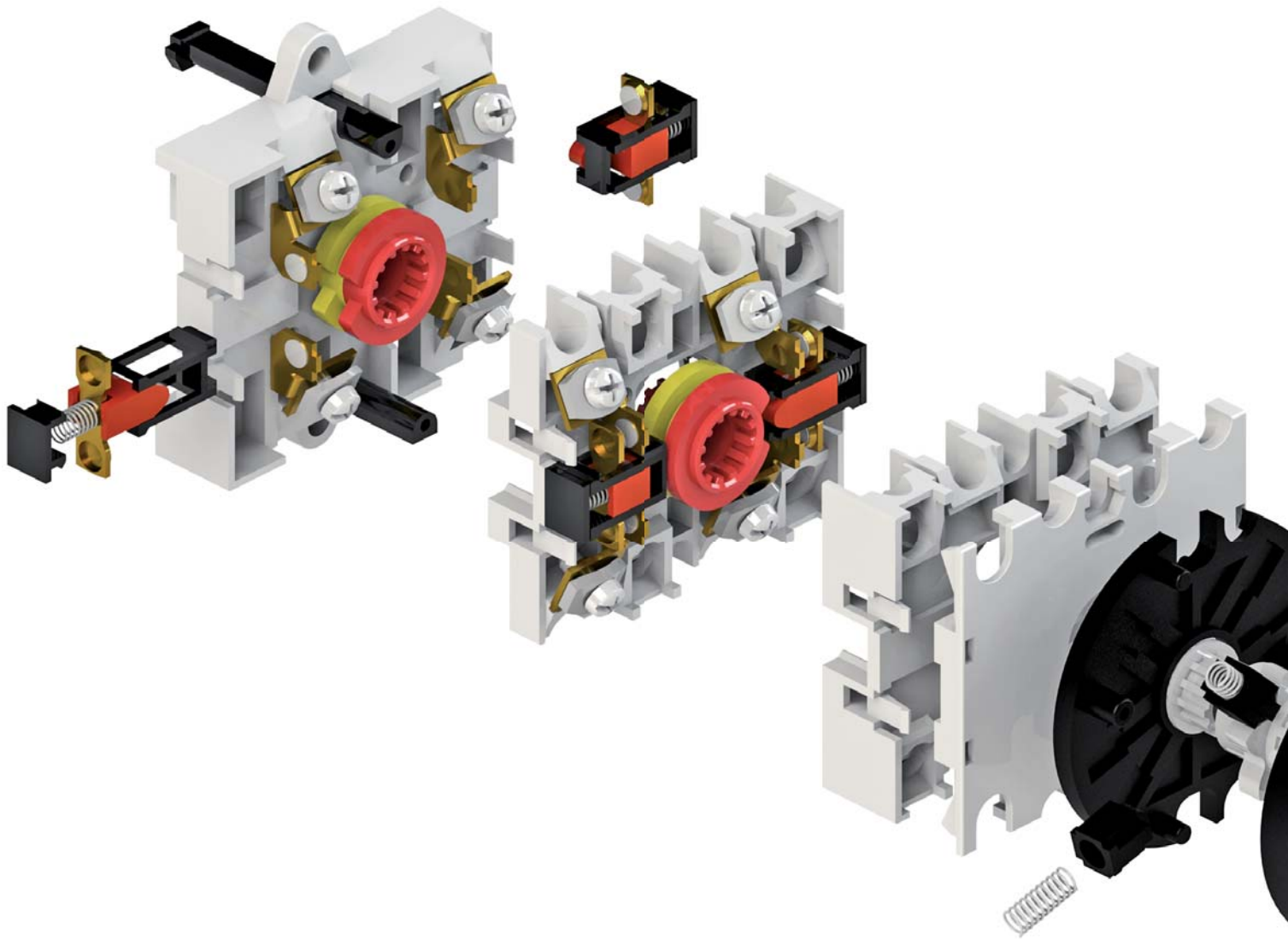


Grebenaste
sklopke
*Rotary cam
switches*
GX





SADRŽAJ *CONTENTS*

SADRŽAJ <i>CONTENTS</i>	1
OPĆENITO <i>GENERAL</i>	2
TEHNIČKI PODACI <i>TECHNICAL DATA</i>	3
STANDARDNI OBLICI UGRADNJE <i>STANDARD MOUNTING FORMS</i>	4
UGRADNE VELIČINE <i>MOUNTING SIZES</i>	4
MJERNE SKICE <i>DIMENSIONAL DRAWINGS</i>	5-6
POTVRDE <i>APPROVALS</i>	6
NARUDŽBENI KOD <i>ORDERING CODE</i>	7-9
POSEBNE IZVEDBE <i>OPTIONAL EXTRAS</i>	10-35
REZERVNI DIJELOVI <i>ACCESSORIES</i>	36-37
PODLOGE <i>ESCUTCHEON PLATES</i>	38-40
PREGLED POSEBNIH IZVEDBI PO STRANICAMA <i>OPTIONAL EXTRAS - REVIEW</i>	44
NARUDŽBENI LIST ZA SPECIJALNE SKLOPKE <i>ORDER SHEET FOR SPECIAL SWITCHES</i>	45





GREBENASTE SKLOPKE serije GX

Gребенасте sklopke GX serije pripadaju novoj seriji гребенастих sklopki sa заштитом од случајних додирa (svi прикључци i краткоспојнице) – DIN/EN61140. Конструиране су према најсавременијим принципима i достигнућима на подручју sklopnih aparata uz uporabu најквалитетнијих изолацијских i контактних материјала. Одликују се високим sklopnim моћима, електричном i механичком трајноћу као i малим димензијима.

Gребенасте sklopke имају вишеструку примјену за sklapanje u главним i помоћним струјним круговима:

- као моторске sklopke могу погонски сигурно sklapati, управљати i покретати трофазне i једнофазне motore, a могу се извести као: преклопка звјезда - трокут, преклопка за реверзирање, преклопка за motore са више брзина итд.
- u помоћним струјним круговима састављају се према жељеном програму sklapanja: sklopke за командне, сигналне i мјерне кругове
- sklopke, преклопке i stepenaste sklopke нпр. за трансформаторе i апарате за заваривање
- групне sklopke нпр. за sklapanje отпорника i гријача
- закретна тиккала са аутоматским повратом

Sklopke могу имати највише 12 управљачких положаја i 12 sklopnih елемената (24 контакта), a могу се извести с кутем закрета од 30°, 45°, 60° i 90°.

Код sklopki с повећаним моментом прекрета (велики број елемената са специфичним програмом sklapanja, тиккала с већим бројем контаката) u циљу сигурнијег рада користе се sklopke (само уградбене изведбе) с већим раздјелним уређајима које имају **ознаку B** (нпр. GX20B).

Код sklopki гдје се тражи предњи sklop већи од стандардног, sklopke имају **ознаку H** (нпр. GX20H).

Ако се sklopke користе за напоне ниже од 24V i мале струје реда mA, u увјетима прањаве i агресивне атмосфере, тада се могу изградити са позлаћеним контактима.

Sklopke се могу користити при температурама околине од - 25°C до + 55°C. Осим стандардних изведби U, O, P, sklopke могу бити испоручене са читавим низом посебних изведби те као такве могу испунити све захтјеве u најсложенијим постројенијима i уређајима.

Gребенасте sklopke серије GX удовољјавају многим интернационалним i националним прописима као што су:

IEC 60947, IEC 60204, DIN EN 61058, UL 508, C 22.2 No. 14 итд.

ROTARY CAM SWITCHES series GX

Rotary cam switches series GX is the new series of rotary cam switches protected from inadvertent touch (all connections and jumpers) – DIN/EN61140. They have been designed on modern principles taking into consideration the latest achievements in the field of switching devices and using the best insulation and contact materials.

Their advantages are: high making and breaking capacities, electrical and mechanical endurance and small dimensions.

The rotary cam switches are intended for multiple switching operations in main as well as in auxiliary circuits:

- *as motor switches they are designed for direct-online starting and stopping of single-phase and three-phase motors. They also come out as star-delta switches, reversing switches, pole-change over motor switches*
- *in auxiliary circuits they are assembled in compliance with the switching program according to preference: switches for control, signalling and measuring circuits:*
- *switches, selector switches and step switches e.g. for transformers and welding apparatuses*
- *group switches e.g. for switching operations of resistors and heaters*
- *control switch with automatic return*

The rotary cam switches can have 12 control positions and 12 switching elements (24 contacts) maximum and can be made with turning angle of 30°, 45°, 60° and 90°.

*At the switches with the increased turn-over moment (large number of elements with specific switching diagram, switch with automatic return with larger number of contacts), due to more reliable operation, the switches (only front mounting) with the bigger distribution device, **marked with B**, are used (e.g. GX20B).*

*At the switches where is front part bigger than standard size required, the switches are **marked with H** (e.g. GX20H).*

When the switches are used at lower voltages than 24 V and currents of mA in dusty and aggressive environment, the contacts can be gold-plated. The switches can be used at the environment temperature from - 25°C to + 55°C.

Besides the standard mounting forms U, O, P, the switches are available with a large number of optional extras and they comply with all requirements in the most complicated plants and devices.






*Rotary cam switches series GX comply with many international and national standards such as: **IEC 60947, IEC 60204, DIN EN 61058, UL 508, C 22.2 No. 14** and many others.*

TIP SKLOPKE SWITCH TYPE				GX16 GX16H	GX20 GX20H	GX32 GX32H	GX40 GX40H
Nazivni izolacijski napon <i>Rated insulation voltage</i>	1)	U_i	IEC/VDE/BS UL/CSA	V V	690 600	690 600	690 600
Nazivni udarni podnosivi napon <i>Rated impulse withstand voltage</i>		U_{imp}	IEC-60947 (III/3)	kV	6	6	6
Nazivna termička struja <i>Rated thermal current</i>		I_{th}	IEC/VDE/BS UL/CSA	A A	16 12	20 15	32 32
Glavna sklopka IEC-60947 (III/3) 1)			Najveća vrijednost nazivnog pogonskog napona <i>Max. value of rated operational voltage</i> Nazivni udarni podnosivi napon <i>Rated impulse withstand voltage</i>	V kV	440 4	440 4	440 4
Max. veličina osigurača za zaštitu od kratkog spoja <i>Max. fuse size for short circuit protection</i>		I_n (gG/gL)	10 kA 25 kA	A A	16 16	20 16	35 35
Nazivna kratkotrajno podnosiva struja <i>Rated short-time withstand current</i>		I_{cw}	1 sec	A	250	250	1000
Nazivna pogonska struja <i>Rated operational current</i>		I_e	AC1/AC21A IEC/VDE/BS 110 V AC15 220/230 V IEC/VDE 380/400 V 660/690 V	A A A A A	16 10 8 4 1,5	20 10 8 6 1,5	32 25 20 10 2
Motorska sklopka za kategoriju upotrebe	AC3		IEC/VDE/BS 3 faze 3 phase 220/230 V 380-440 V 500-690 V	kW kW kW	3,5 4,5 5,5	3,7 5,5 5,5	7,5 11 11
Motor switch in utilization category			1 faza, 2 pola 1 phase, 2 pole 120 V 220/230 V 380-440 V	kW kW kW	- 1,5 2,2	- 1,8 3	1,8 3,5 5,5
	AC23		IEC/VDE/BS 3 faze 3 phase 220/230 V 380-440 V 500-690 V	kW kW kW	3,7 6,5 7,5	4 7,5 7,5	8 15 15
			1 faza, 2 pola 1 phase, 2 pole 120 V 220/230 V 380-440 V	kW kW kW	- 1,8 3	- 2,2 3,5	2,2 3,5 6
Motorska sklopka Motor switch	DOL		UL/CSA 3 faze 3 phase 120 V 240 V 480 V 600 V	HP HP HP HP	1,5 3 5 5	1,5 3 5 5	3 7,5 15 15
Prekidanje kod istosmjerne struje <i>DC Switching capacity</i>	DC21A	T=1 ms	48 V Nazivna struja Rated current 220 V for 1 kontakt 440 V	A A A A A	16 16 4 0,6 0,25	20 20 4 0,6 0,25	32 32 5 0,8 0,25
	DC23	T=15 ms	24 V Nazivna struja Rated current, (Broj kontakata u seriji) (Number of series contacts) 220 V	A A A A A	16 ¹⁾ 16 ²⁾ 16 ³⁾ 10 ³⁾ 10 ⁴⁾	20 ¹⁾ 20 ²⁾ 20 ³⁾ 10 ³⁾ 8 ⁴⁾	32 ¹⁾ 32 ²⁾ 32 ³⁾ 15 ³⁾ 12 ⁴⁾
	DC13	T=50 ms	48 V Nazivna struja Rated current 110 V za 1 kontakt for 1 kontakt 440 V	A A A A A	14 10 1 0,4 0,15	16 12 1 0,4 0,15	25 14 3 0,5 0,15
Mehanička trajnost <i>Mechanical durability</i>			Broj uklopa <i>Switching cycles</i>		1x10 ⁶	1x10 ⁶	1x10 ⁶
Priključni vijak <i>Terminal screw</i>				M	3	3	4
Presjek vodiča <i>Conductor size</i>		max. r/f		2x $\frac{mm^2}{AWG}$	2,5/2,5 12/12	2,5/2,5 12/12	10/6 8/10
		r = kruti, višezilni / rigid f = finožičani / flexible	min. r/f	2x $\frac{mm^2}{AWG}$	0,5/0,5 20/20	0,5/0,5 20/20	1,5/1,5 16/16

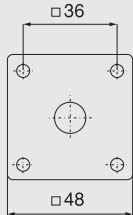
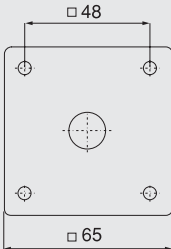
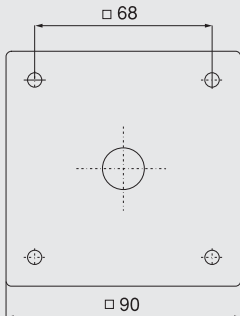
1) vrijedi za mreže sa uzemljenim zvjezdištem, prenaponska kategorija III, stupanj zagađenja 3

1) valid for neutral earthed systems, overvoltage category III, pollution degree 3.

STANDARDNI OBLICI UGRADNJE *STANDARD MOUNTING FORMS*

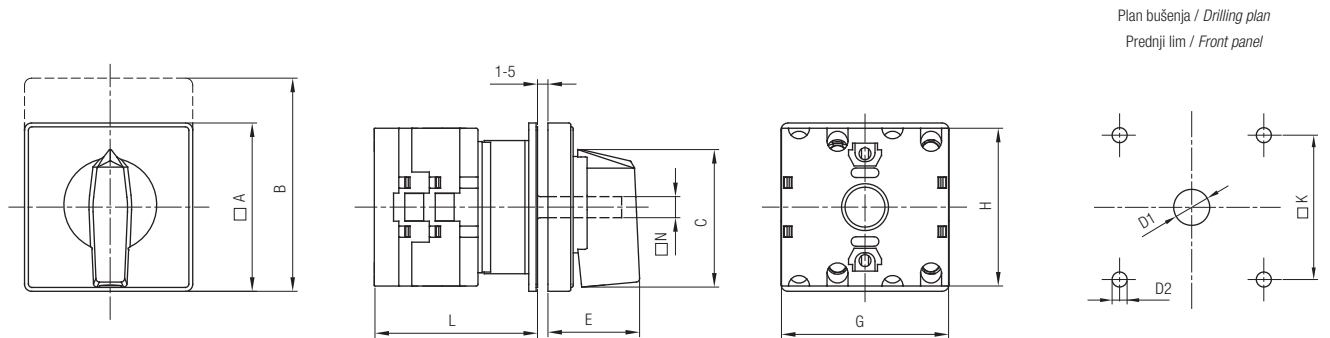
Oblik ugradnje <i>Mounting form</i>	Oznaka <i>Marking</i>	Zaštita <i>Protection</i>		Tip <i>Type</i>	Veličina <i>Size</i>	Izgled <i>Outlook</i>
		Prednja <i>Front</i>	Stražnja <i>Rear</i>			
Ugradna sklopka <i>Front mounting</i>	U	IP 40	IP 20	GX16 GX20 GX32 GX40	A0 A0 A1 A1	
Ugradna sklopka s većim prednjim sklopom <i>Front mounting with the bigger front part i.e. mounting size</i>	U	IP 40	IP 20	GX16H GX20H GX32H GX40H	A1 A1 A2 A2	
Sklopka za odvojenu ugradnju <i>Rear mounting</i>	O	IP 40	IP 20	GX16 GX20 GX32 GX40	A0 A0 A1 A1	
Sklopka za odvojenu ugradnju s većim prednjim sklopom <i>Rear mounting with the bigger front part i.e. mounting size</i>	O	IP 40	IP 20	GX16H GX20H GX32H GX40H	A1 A1 A2 A2	
Sklopka u plastičnom kućištu <i>Switch in plastic casing</i>	P		IP65 IP65 IP65 IP65	GX16 GX20 GX32 GX40		

UGRADNE VELIČINE *MOUNTING SIZES*

A0	A1	A2
GX16 GX20	GX32 GX40 GX16H GX20H	GX32H GX40H
		

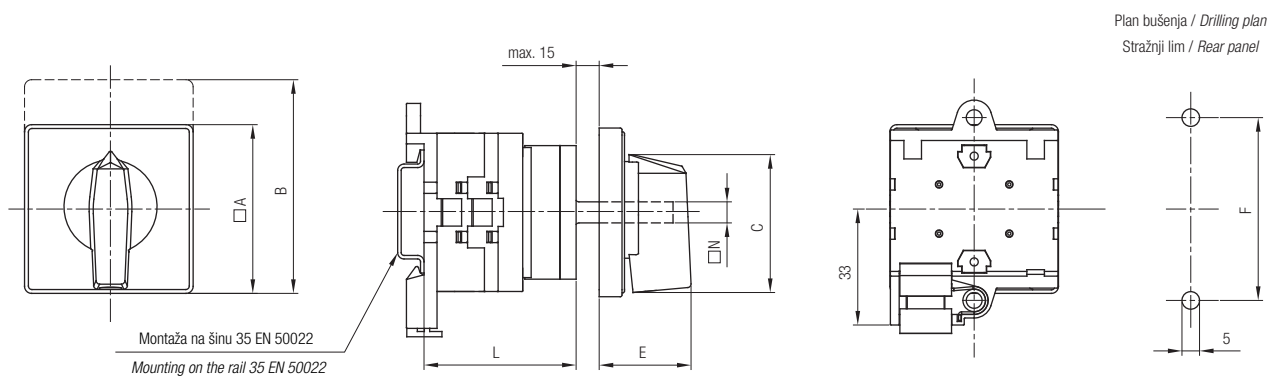
MJERNE SKICE *DIMENSIONAL DRAWINGS* (mm)

U - Ugradna sklopka *Front mounting*



Tip/Type	Oznaka / Marking										Broj elemenata												L												Number of elements											
	□A	B	C	∅D1	∅D2	E	G	H	□K	□N	1	2	3	4	5	6	7	8	9	10	11	12	1	2	3	4	5	6	7	8	9	10	11	12												
GX16	48	60	39,5	12	5	26,5	47,7	45	36	6	40	48,5	57	65,5	74	82,5	91	99,5	108	116,5	125	133,5	40	48,5	57	65,5	74	82,5	91	99,5	108	116,5	125	133,5												
GX16H	65	80	53	12	5	34,5	47,7	45	48	6	40,5	49	57,5	66	74,5	83	91,5	100	108,5	117	125,5	134	40,5	49	57,5	66	74,5	83	91,5	100	108,5	117	125,5	134												
GX20	48	60	39,5	12	5	26,5	47,7	45	36	6	40	48,5	57	65,5	74	82,5	91	99,5	108	116,5	125	133,5	40	48,5	57	65,5	74	82,5	91	99,5	108	116,5	125	133,5												
GX20H	65	80	53	12	5	34,5	47,7	45	48	6	40,5	49	57,5	66	74,5	83	91,5	100	108,5	117	125,5	134	40,5	49	57,5	66	74,5	83	91,5	100	108,5	117	125,5	134												
GX32	65	80	53	14	5	34,5	66	58	48	7	48	60	72	84	96	108	120	132	144	156	168	180	48	60	72	84	96	108	120	132	144	156	168	180												
GX32H	90	110	70,5	14	6	41,5	66	58	68	7	50	62	74	86	98	110	122	134	146	158	170	182	50	62	74	86	98	110	122	134	146	158	170	182												
GX40	65	80	53	14	5	34,5	66	58	48	7	48	60	72	84	96	108	120	132	144	156	168	180	48	60	72	84	96	108	120	132	144	156	168	180												
GX40H	90	110	70,5	14	6	41,5	66	58	68	7	50	62	74	86	98	110	122	134	146	158	170	182	50	62	74	86	98	110	122	134	146	158	170	182												

O - Sklopka za odvojenu ugradnju *Rear mounting*



*Plan bušenja prednje ploče kao kod ugradne sklopke (U)
 *Drilling plan of front panel as at front mounting switch (U)

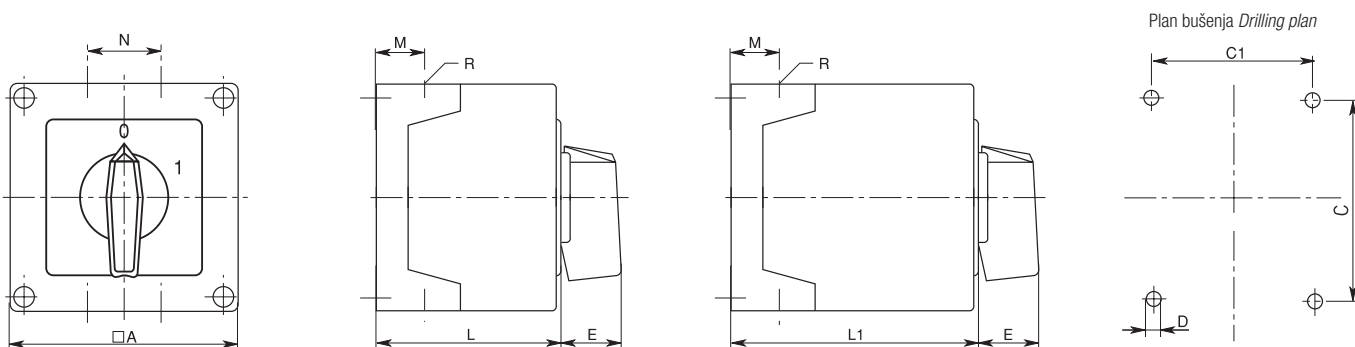
Tip/Type	Oznaka / Marking										Broj elemenata												L												Number of elements											
	□A	B	C	E	F	□N	1	2	3	4	5	6	7	8	9	10	11	12	1	2	3	4	5	6	7	8	9	10	11	12	1	2	3	4	5	6	7	8	9	10	11	12				
GX16	48	60	39,5	26,5	52	6	37	45,5	54	62,5	71	79,5	88	96,5	105	113,5	122	130,5	37	45,5	54	62,5	71	79,5	88	96,5	105	113,5	122	130,5																
GX16H	65	80	53	34,5	52	6	37	45,5	54	62,5	71	79,5	88	96,5	105	113,5	122	130,5	37	45,5	54	62,5	71	79,5	88	96,5	105	113,5	122	130,5																
GX20	48	60	39,5	26,5	52	6	37	45,5	54	62,5	71	79,5	88	96,5	105	113,5	122	130,5	37	45,5	54	62,5	71	79,5	88	96,5	105	113,5	122	130,5																
GX20H	65	80	53	34,5	52	6	37	45,5	54	62,5	71	79,5	88	96,5	105	113,5	122	130,5	37	45,5	54	62,5	71	79,5	88	96,5	105	113,5	122	130,5																
GX32	65	80	53	34,5	68	7	48	60	72	84	96	108	120	132	144	156	168	180	48	60	72	84	96	108	120	132	144	156	168	180																
GX32H	90	110	70,5	41,5	68	7	48	60	72	84	96	108	120	132	144	156	168	180	48	60	72	84	96	108	120	132	144	156	168	180																
GX40	65	80	53	34,5	68	7	48	60	72	84	96	108	120	132	144	156	168	180	48	60	72	84	96	108	120	132	144	156	168	180																
GX40H	90	110	70,5	41,5	68	7	48	60	72	84	96	108	120	132	144	156	168	180	48	60	72	84	96	108	120	132	144	156	168	180																

B - Sklopka s većim razdjelnim uređajem *Switch with bigger locating device*

Tip/Type	Broj elemenata												L												Number of elements											
	1	2	3	4	5	6	7	8	9	10	11	12	1	2	3	4	5	6	7	8	9	10	11	12	1	2	3	4	5	6	7	8	9	10	11	12
GX16B - U	46,7	55,2	63,7	72,2	80,7	89,2	97,7	106,2	114,7	123,2	131,7	140,2	46,7	55,2	63,7	72,2	80,7	89,2	97,7	106,2	114,7	123,2	131,7	140,2	46,7	55,2	63,7	72,2	80,7	89,2	97,7	106,2	114,7	123,2	131,7	140,2
GX20B - U	46,7	55,2	63,7	72,2	80,7	89,2	97,7	106,2	114,7	123,2	131,7	140,2	46,7	55,2	63,7	72,2	80,7	89,2	97,7	106,2	114,7	123,2	131,7	140,2	46,7	55,2	63,7	72,2	80,7	89,2	97,7	106,2	114,7	123,2	131,7	140,2
GX32B - U	58,4	70,4	82,4	94,5	106,4	118,4	130,4	142,4	154,4	166,4	178,4	190,4	58,4	70,4	82,4	94,4	106,4	118,4	130,4	142,4	154,4	166,4	178,4	190,4	58,4	70,4	82,4	94,4	106,4	118,4	130,4	142,4	154,4	166,4	178,4	190,4
GX40B - U	58,4	70,4	82,4	94,4	106,4	118,4	130,4	142,4	154,4	166,4	178,4	190,4	58,4	70,4	82,4	94,4	106,4	118,4	130,4	142,4	154,4	166,4	178,4	190,4	58,4	70,4	82,4	94,4	106,4	118,4	130,4	142,4	154,4	166,4	178,4	190,4

MJERNE SKICE *DIMENSIONAL DRAWINGS* (mm)

P - SKLOPKA U PLASTIČNOM KUĆIŠTU *SWITCH IN PLASTIC CASING*



Tip/Type	Tip kućišta Housing size	Broj elemenata Number of elements		A	C	C1	D	E	M	N	L	L1	Zaštita Protection	Uvodnice Conduit entries	
		L	L1											R(Pg)	R(M...x1,5)
GX16 GX20	90x90	1-2	3-5	90	79	63	4,5	25	19	30	71,3	98,3	IP65	4xPg16	ili / or 4xM20
GX16 GX20	110x110	1-3	4-7	110	98,4	83	4,5	32	21	39,5	85,5	119,5	IP65	4xPg21	ili / or 4xM25
GX32 GX40		1-2	3-4												

POTVRDE *APPROVALS*

ZEMLJA LAND	ZNAK SYMBOL	GX16	GX20	GX32	GX40
USA / Canada		■	■	■	■
Nizozemska Netherland		■	■	■	■
Rusija Russia		■	■	■	■

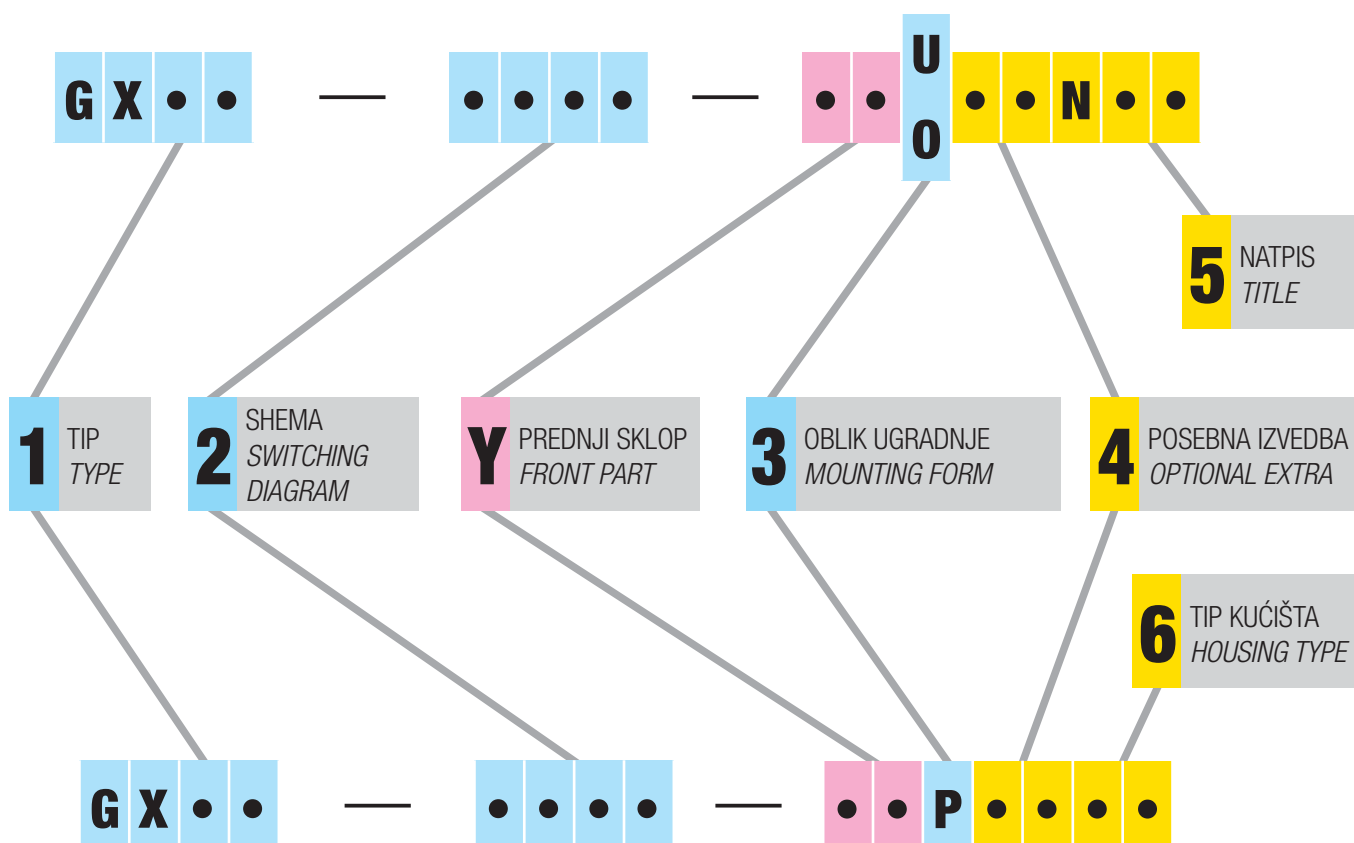
NARUDŽBENI KOD *ORDERING CODE*

Prilikom naručivanja sklopke potrebno je definirati:

- za **standardnu izvedbu** sklopke 3 tipa podataka **1 2 3**
- za sklopke s **posebnom izvedbom** maksimalno 5 tipova podataka **1 2 3 4 5** ili **1 2 3 4 6**
- za sklopku sa **specijalnim zahtjevima** maksimalno 6 tipova podataka **1 2 3 4 5 Y** ili **1 2 3 4 6 Y**

When ordering please define:

- for **standard** switch three data types **1 2 3**
- for switch with an **optional extra** max. 5 data types **1 2 3 4 5** or **1 2 3 4 6**
- for switch with **special requests** max. 6 data types **1 2 3 4 5 Y** or **1 2 3 4 6 Y**

**OPIS***DESCRIPTION*

1	Tip sklopke. Odabire se prema tehničkim zahtjevima (vidi str. 3) i ugradbenoj veličini (vidi stranu 4)	Switch type. To be chosen in accordance with the technical requests (see page 3) and mounting size (see page 4)
2	Shema. Odabire se prema programu sklapanja (vidi katalog shema 74002)	Switching diagram. To be chosen in accordance with the switching program (see catalogue with scheme 74002)
Y	Prednji sklop. Upisuje se samo ako se traži nestandardna kombinacija boja i oblika prednjeg sklopa (vidi str. 8)	Front part. To be marked only when non-standard front part colour and form combination is required (see page 8)
3	Standardni oblici ugradnje (vidi str. 4)	Standard mounting forms (see page 4)
4	Upisuje se ako se traži posebna izvedba (vidi str. 10 - 35)	To be marked when an optional extra is required (see pages 10 - 35)
5	"N" se upisuje ako se traži prednja ploča s natpisom (vidi str. 38)	"N" is to be written when the front plate with a title is required (see page 38)
6	Upisuje se ako se traži nestandardna izvedba plastičnog kućišta (vidi str. 9)	To be marked when a non-standard plastic casing version is required (see page 9)

Y - PREDNJI SKLOP *FRONT PART*

Tablice prikazuju moguće kombinacije boja prednjeg sklopa i pripadajuće kodne oznake. Prva linija odnosi se na **standardnu** kombinaciju za koju nije potrebno upisivati kod.

The tables show possible front part colour combinations and corresponding codes to be marked. The first line refers to the **standard** combination for which no code is to be marked.

1. OBLIK UGRADNJE:

Ugradna sklopka (U) ili sklopka za odvojenu ugradnju (O).

1. MOUNTING FORM:

Front mounting (U) or rear mounting (O).

				KOD / CODE			
Ručica <i>Handle</i>	Prednja ploča <i>Front plate</i>	Podloga <i>Escutch. plate</i>	Tekst <i>Text</i>	Y	Prednji sklop <i>Front part</i>	3	Oblik ugradnje <i>Mounting form</i>
crna <i>black</i>	crna <i>black</i>	bijela <i>white</i>	crna <i>black</i>				
crna <i>black</i>	crna <i>black</i>	srebrna <i>silver</i>	crna <i>black</i>		10		U ili / or O
crna <i>black</i>	crna <i>black</i>	crna <i>black</i>	bijela <i>white</i>		20		
siva <i>grey</i>	siva <i>grey</i>	crna <i>black</i>	bijela <i>white</i>		30		
siva <i>grey</i>	siva <i>grey</i>	bijela <i>white</i>	crna <i>black</i>		40		

PRIMJER: Za sklopku GX20, shema 100, standardna kombinacija boja, ugradna sklopka, narudžbena oznaka glasi:

EXAMPLE: For switch GX20, switching diagram 100, standard colour combination, front mounting, the ordering code is:

GX20 - 100 - U

Ista sklopka, ali sa sivom ručicom, sivom prednjom pločom, bijelom podlogom i crnim tekstom ima narudžbenu oznaku:

The same switch but with grey handle, grey front plate, white escutcheon plate, black text, has the ordering code:

GX20 - 100 - 40 U

NAPOMENA: za specijalne izvedbe 06, 06D, 41/42, 41D, 48/48D, 56, 71/72, 76/77, 85 i 87 kombinacije boja su opisane u poglavlju POSEBNE IZVEDBE

REMARK: for optional extras 06, 06D, 41/42, 41D, 48/48D, 56, 71/72, 76/77, 85 and 87 combination of colours are described in the head OPTIONAL EXTRAS

2. OBLIK UGRADNJE:

Sklopka u plastičnom kućištu (P)

2. MOUNTING FORM:

Switch in plastic casing (P)

				KOD / CODE			
Kućište <i>Casing</i>	Ručica <i>Handle</i>	Podloga <i>Escutch. plate</i>	Tekst <i>Text</i>	Y	Prednji sklop <i>Front part</i>	3	Oblik ugradnje <i>Mounting form</i>
siva <i>grey</i>	crna <i>black</i>	bijela <i>white</i>	crna <i>black</i>				
siva <i>grey</i>	crna <i>black</i>	srebrna <i>silver</i>	crna <i>black</i>		10		P
siva <i>grey</i>	siva <i>grey</i>	crna <i>black</i>	bijela <i>white</i>		20		
siva <i>grey</i>	siva <i>grey</i>	bijela <i>white</i>	crna <i>black</i>		30		

PRIMJER: Za sklopku GX20, shema 100, standardna kombinacija boja, u plastičnom kućištu, narudžbena oznaka glasi:

EXAMPLE: For switch GX20, switching diagram 100, standard colour combination, in plastic casing, the ordering code is:

GX20 - 100 - P

Ista sklopka, ali sa sivom ručicom, bijelom podlogom i crnim tekstom ima narudžbenu oznaku:

The same switch but with grey handle, white escutcheon plate, black text, has the ordering code:

GX20 - 100 - 30 P

NAPOMENA: za specijalne izvedbe 06, 23, 25, 56, 73 i 75 kombinacije boja su opisane u poglavlju POSEBNE IZVEDBE

REMARK: for optional extras 06, 23, 25, 56, 73 and 75 combination of colours are described in the head OPTIONAL EXTRAS

IZBOR PLASTIČNOG KUĆIŠTA *PLASTIC CASING SELECTION*

			KOD / CODE		
Tip kućišta (mm) <i>Casing size</i>	Zaštita <i>Protection</i>	Uvodnice <i>Conduit entries</i>	6	Vrsta kućišta <i>Housing type</i>	Tip sklopke <i>Switch type</i>
90x90	IP65	4xPg16			GX16/GX20
	IP65	4xM20x1,5		C2	GX16/GX20
110x110	IP65	4xPg21			GX32/GX40
	IP65	4xPg21		E1	GX16/GX20
	IP65	4xM25x1,5		E2	GX16/GX20/GX32/GX40

PRIMJER: Za sklopku GX20, shema 100, standardna kombinacija boja, plastično kućište 90 x 90, sa standardnom zaštitom i ulaznicama, narudžbena oznaka glasi:

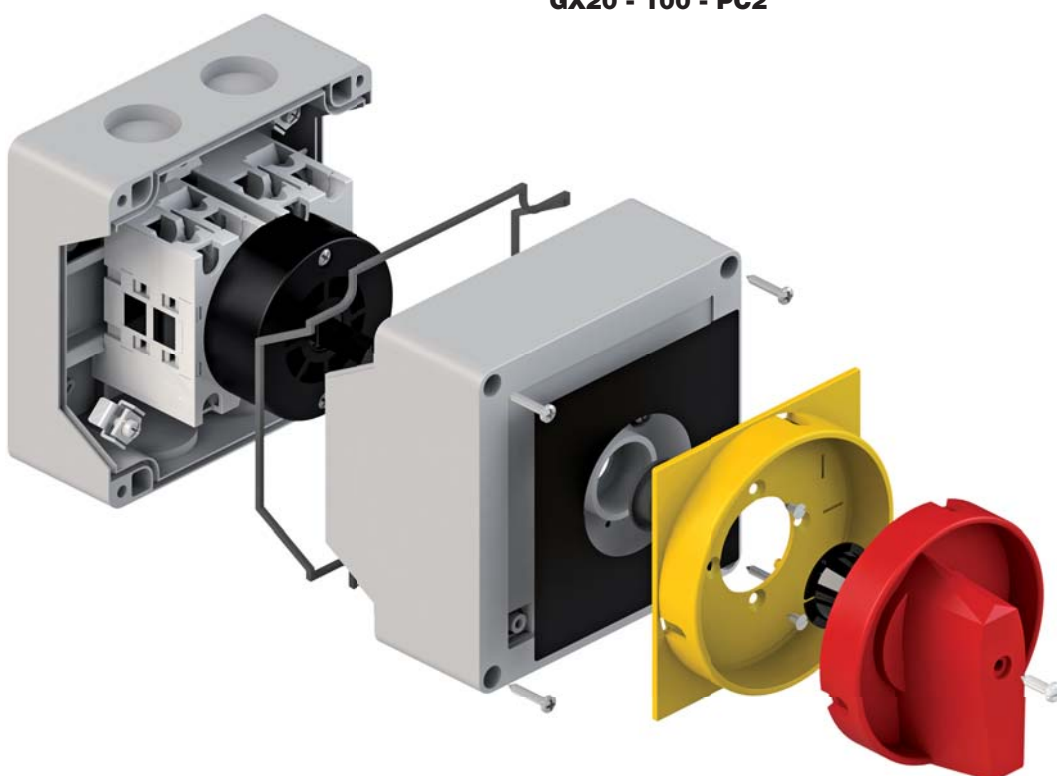
EXAMPLE: For the switch GX20 switching diagram 100, standard colour combination, plastic casing 90 x 90, with standard protection and conduit entries, the ordering code is:

GX20 - 100 - P

Ista sklopka u istom kućištu ali sa ulaznicama 4 x M20 x 1,5 ima narudžbenu oznaku:

The same switch in the same casing but with conduit entries 4 x M20 x 1,5 has the ordering code:

GX20 - 100 - PC2



POSEBNE IZVEDBE *OPTIONAL EXTRAS*

KOD *CODE*

POVEĆANI STUPANJ ZAŠTITE
INCREASED PROTECTION DEGREE

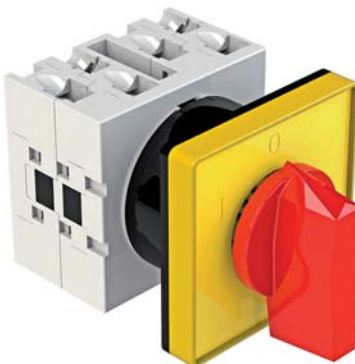


51

Zaštita sprijeda IP65
Front protection IP65

GX16	U	51
GX16H	U	51
GX20	U	51
GX20H	U	51
GX32	U	51
GX32H	U	51
GX40	U	51
GX40H	U	51
GX16	O	51
GX16H	O	51
GX20	O	51
GX20H	O	51
GX32	O	51
GX32H	O	51
GX40	O	51
GX40H	O	51

SKLOPKA ZA NUŽNO ISKLAPANJE
EMERGENCY OFF SWITCH

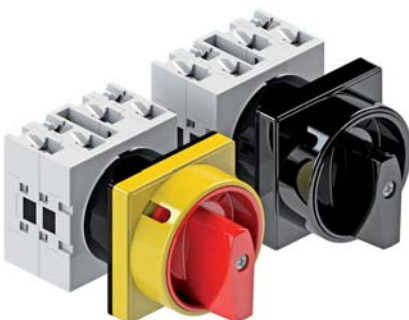


24

Standardna sklopka sa žutom prednjom pločom, žutom podlogom i crvenom ručicom.
Standard switch with yellow front plate, yellow escutcheon plate and red handle.

GX16	U	24
GX16H	U	24
GX20	U	24
GX20H	U	24
GX32	U	24
GX32H	U	24
GX40	U	24
GX40H	U	24
GX16	O	24
GX16H	O	24
GX20	O	24
GX20H	O	24
GX32	O	24
GX32H	O	24
GX40	O	24
GX40H	O	24

GLAVNA SKLOPKA
MAIN SWITCH
GLAVNA SKLOPKA UJEDNO I SKLOPKA ZA NUŽNO ISKLAPANJE
MAIN SWITCH WITH EMERGENCY



23
25

Zaključavanje samo u "0".
Zaštita od slučajnog dodira dovodnih priključnih stezaljki pod naponom.
Kut zakreta 60° i 90°.

*Locking only in "0".
Protection against an accidental contact with the supplying terminals under voltage.
Switching angle 60° and 90°.*

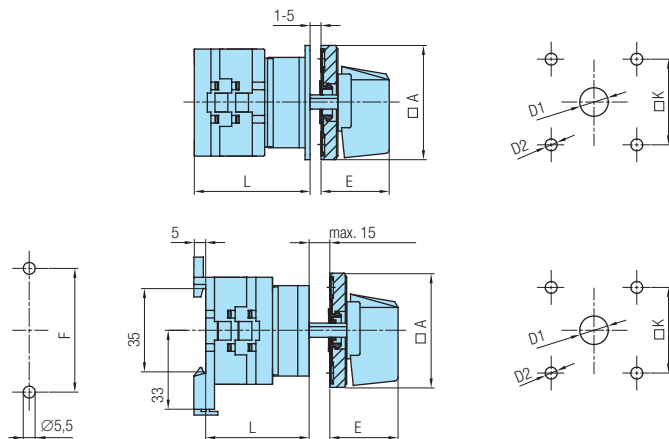


GX16	U	23	25
GX16H	U	23	25
GX20	U	23	25
GX20H	U	23	25
GX32	U	23	25
GX32H	U	23	25
GX40	U	23	25
GX40H	U	23	25
GX16	O	23	25
GX16H	O	23	25
GX20	O	23	25
GX20H	O	23	25
GX32	O	23	25
GX32H	O	23	25
GX40	O	23	25
GX40H	O	23	25

MJERNE SKICE *DIMENSIONAL DRAWINGS* (mm)

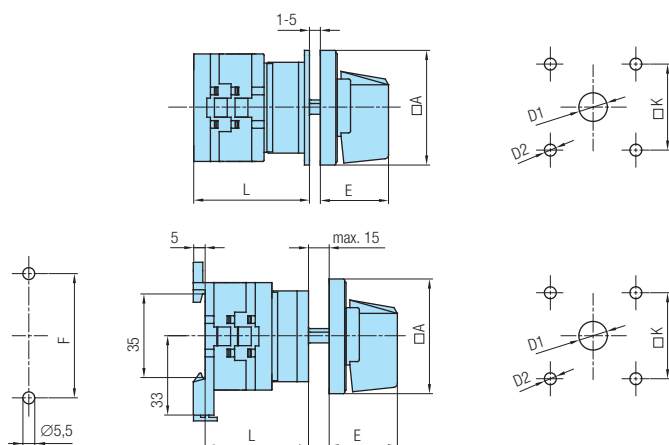
Plan bušenja / *Drilling plan*
Stražnji lim / *Rear panel*

Plan bušenja / *Drilling plan*
Prednji lim / *Front panel*



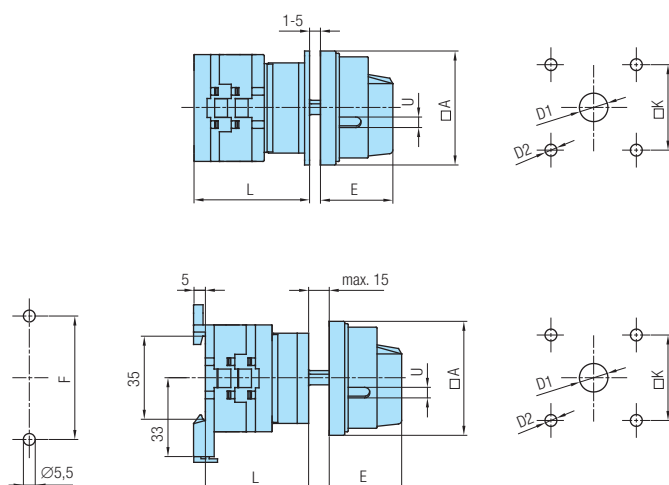
Tip Type	Oznaka / Marking					L			
	□A	D1	D2	E	□K	1	2	3.....12	
GX 16	48	12	5	26,5	36	40	48,5	57	133,5
GX 16H	65	12	5	34,5	48	40,5	49	57,5	134
GX 20	48	12	5	26,5	36	40	48,5	57	133,5
GX 20H	65	12	5	34,5	48	40,5	49	57,5	134
GX 32	65	14	5	34,5	48	48	60	72	180
GX 32H	90	14	6	41,5	68	50	62	74	182
GX 40	65	14	5	34,5	48	48	60	72	180
GX 40H	90	14	6	41,5	68	50	62	74	182

Tip Type	Oznaka / Marking						L			
	□A	D1	D2	E	F	□K	1	2	3.....12	
GX 16	48	12	5	26,5	52	36	37	45,5	54	130,5
GX 16H	65	12	5	34,5	52	48	37	45,5	54	130,5
GX 20	48	12	5	26,5	52	36	37	45,5	54	130,5
GX 20H	65	12	5	34,5	52	48	37	45,5	54	130,5
GX 32	65	14	5	34,5	68	48	48	60	72	180
GX 32H	90	14	6	41,5	68	68	48	60	72	180
GX 40	65	14	5	34,5	68	48	48	60	72	180
GX 40H	90	14	6	41,5	68	68	48	60	72	180



Tip Type	Oznaka / Marking					L			
	□A	D1	D2	E	□K	1	2	3.....12	
GX 16	48	12	5	26,5	36	40	48,5	57	133,5
GX 16H	65	12	5	34,5	48	40,5	49	57,5	134
GX 20	48	12	5	26,5	36	40	48,5	57	133,5
GX 20H	65	12	5	34,5	48	40,5	49	57,5	134
GX 32	65	14	5	34,5	48	48	60	72	180
GX 32H	90	14	6	41,5	68	50	62	74	182
GX 40	65	14	5	34,5	48	48	60	72	180
GX 40H	90	14	6	41,5	68	50	62	74	182

Tip Type	Oznaka / Marking						L			
	□A	D1	D2	E	F	□K	1	2	3.....12	
GX 16	48	12	5	26,5	52	36	37	45,5	54	130,5
GX 16H	65	12	5	34,5	52	48	37	45,5	54	130,5
GX 20	48	12	5	26,5	52	36	37	45,5	54	130,5
GX 20H	65	12	5	34,5	52	48	37	45,5	54	130,5
GX 32	65	14	5	34,5	68	48	48	60	72	180
GX 32H	90	14	6	41,5	68	68	48	60	72	180
GX 40	65	14	5	34,5	68	48	48	60	72	180
GX 40H	90	14	6	41,5	68	68	48	60	72	180



Tip Type	Oznaka / Marking						L			
	□A	D1	D2	E	U	□K	1	2	3.....12	
GX 16	48	12	5	34,2	5	36	40	48,5	57	133,5
GX 16H	65	12	5	38	6	48	40,5	49	57,5	134
GX 20	48	12	5	34,2	5	36	40	48,5	57	133,5
GX 20H	65	12	5	38	6	48	40,5	49	57,5	134
GX 32	65	14	5	38	6	48	48	60	72	180
GX 32H	90	14	6	49	7	68	50	62	74	182
GX 40	65	14	5	38	6	48	48	60	72	180
GX 40H	90	14	6	49	7	68	50	62	74	182

Tip Type	Oznaka / Marking						L				
	□A	D1	D2	E	F	U	□K	1	2	3.....12	
GX 16	48	12	5	34,2	52	5	36	37	45,5	54	130,5
GX 16H	65	12	5	38	52	6	48	37	45,5	54	130,5
GX 20	48	12	5	34,2	52	5	36	37	45,5	54	130,5
GX 20H	65	12	5	38	52	6	48	37	45,5	54	130,5
GX 32	65	14	5	38	68	6	48	48	60	72	180
GX 32H	90	14	6	49	68	7	68	48	60	72	180
GX 40	65	14	5	38	68	6	48	48	60	72	180
GX 40H	90	14	6	49	68	7	68	48	60	72	180

POSEBNE IZVEDBE *OPTIONAL EXTRAS*

KOD *CODE*

SKLOPKE SA ZAKLJUČAVANJEM
SWITCHES WITH LOCKING



56

Standardno zaključavanje u "0"
- moguće i u drugim položajima (potrebno definirati)
Moguća zaključavanja s 1-3 lokota.

*In standard manner locking is in "0"
- possible in other positions, too (please define)
It is possible to use 1-3 padlocks.*

RUČICA HANDLE	PREDNJA PLOČA FRONT PLATE	PODLOGA ESCUTCH. PLATE	Y KOD / CODE
crna / black	crna / black	bijela / white	56
siva / grey	siva / grey	bijela / white	20

GX16 U 56
GX20 U 56

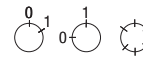
GX16 O 56
GX20 O 56



06

Standardno zaključavanje u "0"
Koristi se kod sklopki 0-1 (60°, 90°). Moguća
upotreba (60°) s većim brojem položaja
(max. 6).

*In standard manner locking is in "0"
Used at switches 0-1 (60°, 90°). Possible use
(60°) with several positions (max. 6).*



RUČICA HANDLE	ČEONA PLOČA COVER PLATE	PREDNJA PLOČA FRONT PLATE
siva / grey	siva / grey	siva / grey

GX16 U 06
GX16H U 06
GX20 U 06
GX20H U 06
GX32 U 06
GX32H U 06
GX40 U 06
GX40H U 06

GX16 O 06
GX16H O 06
GX20 O 06
GX20H O 06
GX32 O 06
GX32H O 06
GX40 O 06
GX40H O 06



06D

Standardno zaključavanje u "0"
- moguće i u drugim položajima (potrebno definirati)
Moguća zaključavanja s 1-4 lokota.

*In standard manner locking is in "0"
- possible in other positions, too (please define)
It is possible to use 1-4 padlocks.*

RUČICA HANDLE	PREDNJA PLOČA FRONT PLATE	PODLOGA ESCUTCH. PLATE	Y KOD / CODE
crna / black	crna / black	bijela / white	56
siva / grey	siva / grey	bijela / white	20
crvena / red	žuta / yellow	žuta / yellow	40
crna / black	crna / black	crna / black	50

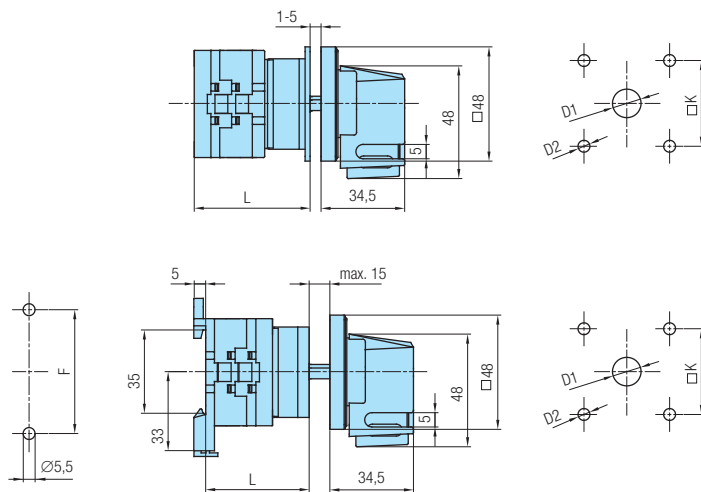
GX32H U 06D
GX40H U 06D

GX32H O 06D
GX40H O 06D

MJERNE SKICE *DIMENSIONAL DRAWINGS* (mm)

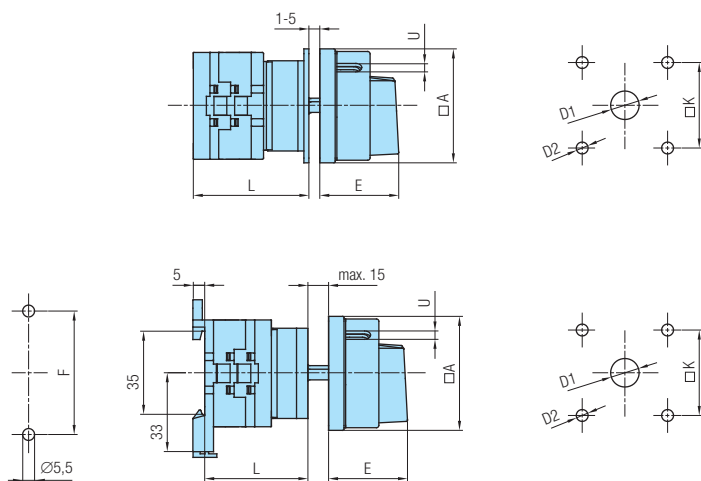
Plan bušenja / *Drilling plan*
Stražnji lim / *Rear panel*

Plan bušenja / *Drilling plan*
Prednji lim / *Front panel*

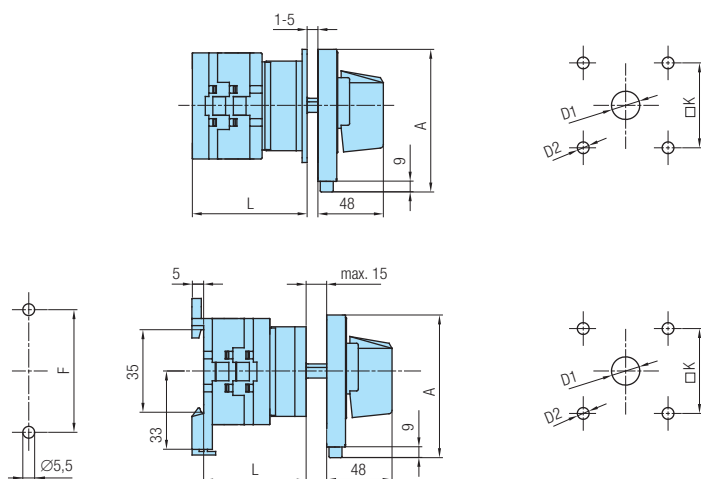


Tip Type	Oznaka / Marking			L			
	D1	D2	□K	1	2	3...12	
GX 16	12	5	36	40	48,5	57	133,5
GX 20	12	5	36	40	48,5	57	133,5

Tip Type	Oznaka / Marking				L			
	D1	D2	F	□K	1	2	3...12	
GX 16	12	5	52	36	37	45,5	54	130,5
GX 20	12	5	52	36	37	45,5	54	130,5



Tip Type	Oznaka / Marking						L			
	□A	D1	D2	E	□K	U	1	2	3...12	
GX 16	48	12	5	34,2	36	5	40	48,5	57	133,5
GX 16H	65	12	5	38	48	6	40,5	49	57,5	134
GX 20	48	12	5	34,2	36	5	40	48,5	57	133,5
GX 20H	65	12	5	38	48	6	40,5	49	57,5	134
GX 32	65	14	5	38	48	6	48	60	72	180
GX 32H	90	14	6	49	68	7	50	62	74	182
GX 40	65	14	5	38	48	6	48	60	72	180
GX 40H	90	14	6	49	68	7	50	62	74	182



Tip Type	Oznaka / Marking				L			
	A	D1	D2	□K	1	2	3...12	
GX 32H	90x112	14	6	68	50	62	74	182
GX 40H	90x112	14	6	68	50	62	74	182

Tip Type	Oznaka / Marking				L				
	A	D1	D2	F	□K	1	2	3...12	
GX 32H	90x112	14	6	68	68	48	60	72	180
GX 40H	90x112	14	6	68	68	48	60	72	180

POSEBNE IZVEDBE *OPTIONAL EXTRAS*

KOD *CODE*

SKLOPKE SA ZAKLJUČAVANJEM
SWITCHES WITH LOCKING



05

Standardno zaključavanje u "0"
- moguće i u drugim položajima (potrebno definirati)
Ključ se vadi samo u zaključanom položaju.

*In standard manner locking is in "0"
- possible in other positions, too (please define)
The key can be pulled out only in locked position.*

GX16H	U	05
GX20H	U	05
GX32	U	05
GX40	U	05



13

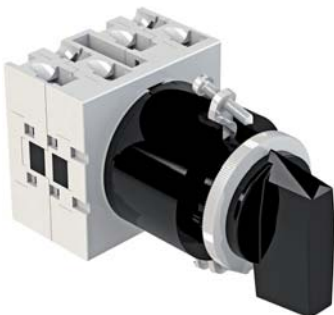
Utični ključ. Standardno vađenje ključa u "0".
Na posebni zahtjev moguće i u drugim položajima pod 90°

*Socket key. In a standard manner pull-out of the key in "0".
Possible in other positions at the angle of 90° (please define).*



GX16H	U	13
GX20H	U	13
GX32	U	13
GX40	U	13

CENTRALNA UGRADNJA
CENTRAL MOUNTING

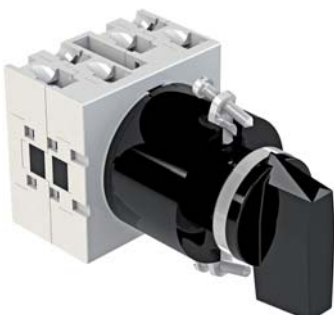


09

Ugradnja u Ø30 mm

Mounting into Ø30 mm

GX16	U	09
GX20	U	09



11

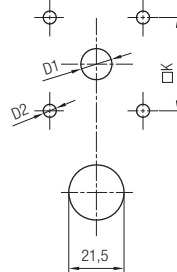
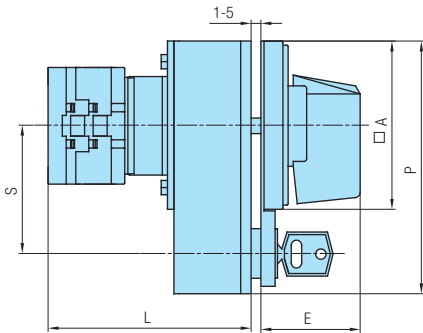
Ugradnja u Ø22 mm

Mounting into Ø22 mm

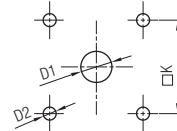
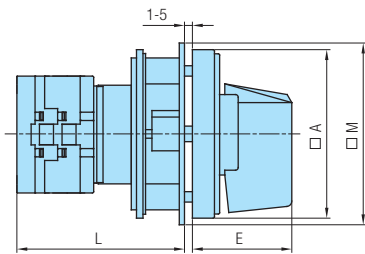
GX16	U	11
GX20	U	11

MJERNE SKICE *DIMENSIONAL DRAWINGS* (mm)

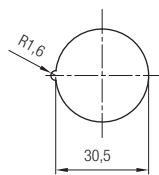
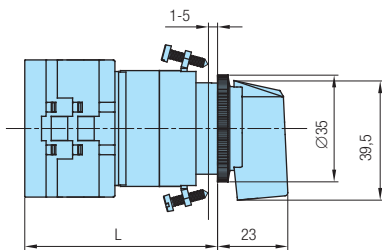
Plan bušenja / *Drilling plan*
Prednji lim / *Front panel*



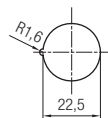
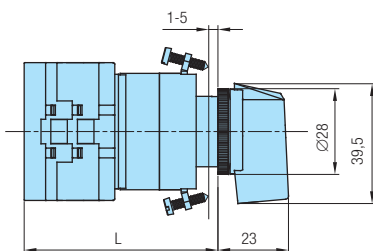
Tip Type	Oznaka / Marking							L			
	□A	D1	D2	E	□K	P	S	1	2	3...12	
GX 16H	65	12	5	36	48	65x98	48	70,5	79	87,5	164
GX 20H	65	12	5	36	48	65x98	48	70,5	79	87,5	164
GX 32	65	14	5	36	48	65x98	48	78	90	102	210
GX 40	65	14	5	36	48	65x98	48	78	90	102	210



Tip Type	Oznaka / Marking							L			
	□A	D1	D2	E	□M	□K	1	2	3...12		
GX 16H	65	12	5	34,5	70	48	55,5	64	72,5	149	
GX 20H	65	12	5	34,5	70	48	55,5	64	72,5	149	
GX 32	65	14	5	34,5	70	48	63	75	87	195	
GX 40	65	14	5	34,5	70	48	63	75	87	195	



Tip Type	L			
	1	2	3...12	
GX 16	54	62,5	71	147,5
GX 20	54	62,5	71	147,5



Tip Type	L			
	1	2	3...12	
GX 16	54	62,5	71	147,5
GX 20	54	62,5	71	147,5

POSEBNE IZVEDBE *OPTIONAL EXTRAS*

KOD *CODE*

CENTRALNA UGRADNJA
CENTRAL MOUNTING



20

Ugradnja u Ø22 mm odnosno Ø30 mm.
Montaža s dva vijka.

Mounting into Ø22 mm or Ø30 mm with two screws.

GX16	U	20
GX20	U	20



36
37

Brza ugradnja u Ø22 mm (izvedba 36),
odnosno Ø30 mm (izvedba 37).

Quick mounting into Ø22 mm (optional extra 36) or into Ø30 mm (optional extra 37).

GX16	U	36	iii / or	37
GX20	U	36		37



47

Brza montaža u Ø22 mm. Utična montaža kontaktnog bloka i prednjeg sklopa (odvajanje u položaju "0").

Quick mounting into Ø22 mm. Snap-on mounting of contact block with front part (separation in position "0").

GX16	U	47
GX20	U	47



67

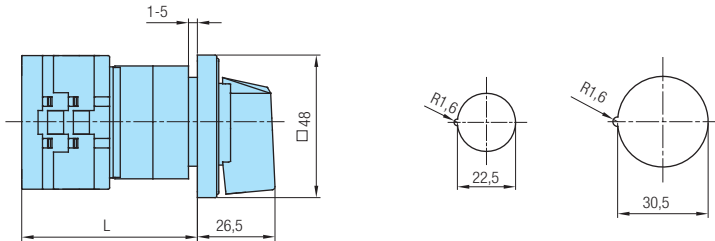
Brza montaža u Ø22 mm. Utična montaža kontaktnog bloka i prednjeg sklopa (odvajanje u položaju "0").

Quick mounting into Ø22 mm. Snap-on mounting of contact block with front part (separation in position "0").

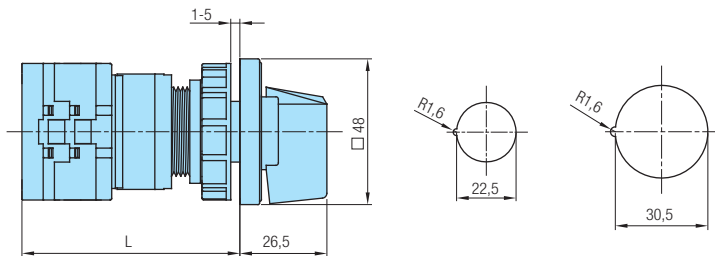
GX16	U	67
GX20	U	67

MJERNE SKICE *DIMENSIONAL DRAWINGS* (mm)

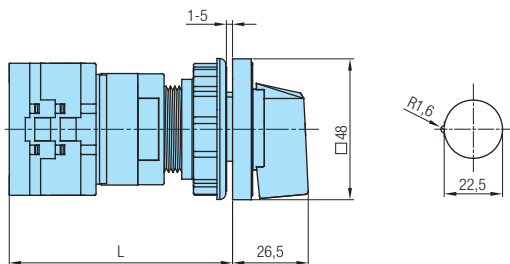
Plan bušenja / *Drilling plan*
Prednji lim / *Front panel*



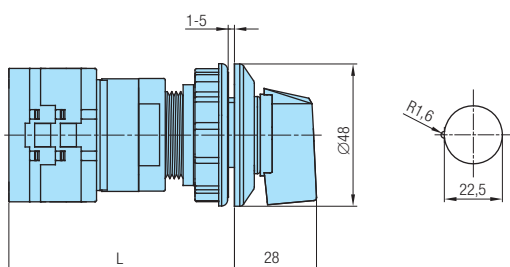
Tip Type	L			
	1	2	3...12	
GX 16	49,2	57,7	66,2	142,7
GX 20	49,2	57,7	66,2	142,7



Tip Type	L			
	1	2	3...12	
GX 16	59,9	68,4	76,9	153,4
GX 20	59,9	68,4	76,9	153,4



Tip Type	L			
	1	2	3...12	
GX 16	64,9	73,4	81,9	158,4
GX 20	64,9	73,4	81,9	158,4



Tip Type	L			
	1	2	3...12	
GX 16	64,9	73,4	81,9	158,4
GX 20	64,9	73,4	81,9	158,4

POSEBNE IZVEDBE *OPTIONAL EXTRAS*

KOD *CODE*

CENTRALNA UGRADNJA - SKLOPKE SA ZAKLJUČAVANJEM
CENTRAL MOUNTING - SWITCHES WITH LOCKING



10

Ugradnja u Ø30 mm.
Zaključavanje odnosno vadenje ključa pod 90°,
Moguća 1 - 4 zaključana položaja unutar 360°
(potrebno definirati).

*Mounting into Ø30 mm.
Locking and pull-out of the key at 90°
Possible 1 - 4 locked positions within 360°
(please define).*



GX16 U 10
GX20 U 10



12

Ugradnja u Ø22 mm.
Zaključavanje odnosno vadenje ključa pod 90°,
Moguća 1 - 4 zaključana položaja unutar 360°
(potrebno definirati).

*Mounting into Ø22 mm.
Locking and pull-out of the key at 90°
Possible 1 - 4 locked positions within 360°
(please define).*



GX16 U 12
GX20 U 12



29
30

Brza montaža u Ø22 mm (izvedba 29)
odnosno u Ø30 mm (izvedba 30).
Zaključavanje odnosno vadenje ključa pod 90°,
Moguća 1 - 4 zaključana položaja unutar 360°
(potrebno definirati).

*Quick mounting into Ø22 mm (optional extra 29)
or into Ø30 mm (optional extra 30).
Locking and pull-out of the key at 90°
Possible 1 - 4 locked positions within 360°
(please define).*



GX16 U 29 / or 30
GX20 U 29 / or 30



41
42

Brza montaža u Ø22 mm (izvedba 41)
odnosno u Ø30 mm (izvedba 42).
Zaključavanje (1 - 3 lokota) u "0",

*Quick mounting into Ø22 mm (optional extra 41)
or into Ø30 mm (optional extra 42).
Padlocking (1 - 3) in "0".*



GX16 U 41 / or 42
GX20 U 41 / or 42

RUČICA HANDLE	PREDNJA PLOČA FRONT PLATE	PODLOGA ESCUTCH. PLATE	Y KOD / CODE
crna/black	crna/black	bijela/white	
siva/grey	siva/grey	bijela/white	20
crvena-žuta/ red-yellow	žuta/yellow	žuta/yellow	40



29D

Ugradnja u Ø22 mm.
Utična montaža kontaktnog bloka i prednjeg sklopa.

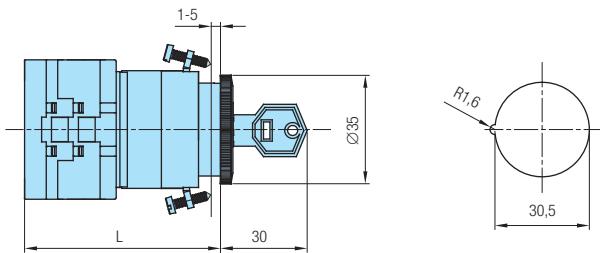
*Mounting into Ø22 mm.
Snap-on mounting of contact block with front part.*



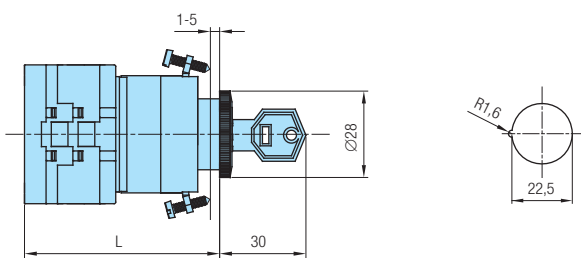
GX16 U 29D
GX20 U 29D

MJERNE SKICE *DIMENSIONAL DRAWINGS* (mm)

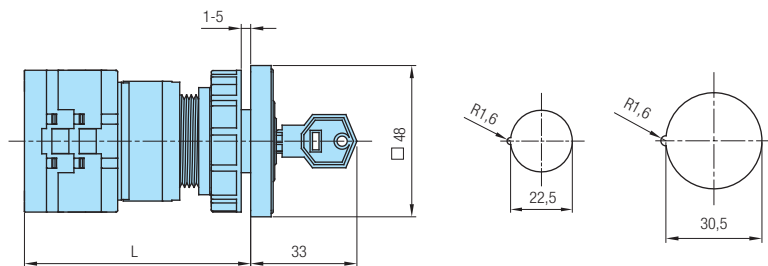
Plan bušenja / *Drilling plan*
Prednji lim / *Front panel*



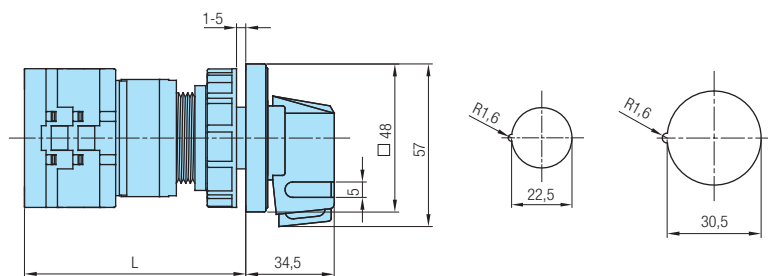
Tip Type	L			
	1	2	3...8	
GX 16	53,9	62,4	70,9	113,4
GX 20	53,9	62,4	70,9	113,4



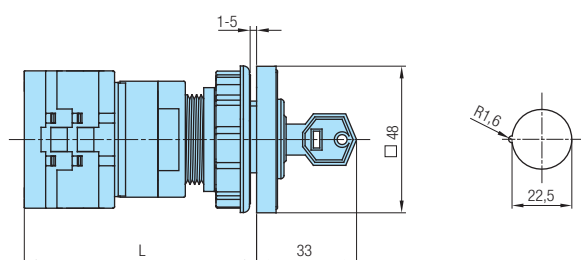
Tip Type	L			
	1	2	3...8	
GX 16	53,9	62,4	70,9	113,4
GX 20	53,9	62,4	70,9	113,4



Tip Type	L			
	1	2	3...8	
GX 16	59,9	68,4	76,9	119,4
GX 20	59,9	68,4	76,9	119,4



Tip Type	L			
	1	2	3...12	
GX 16	59,9	68,4	76,9	153,4
GX 20	59,9	68,4	76,9	153,4



Tip Type	L			
	1	2	3...8	
GX 16	64,9	73,4	81,9	124,4
GX 20	64,9	73,4	81,9	124,4

POSEBNE IZVEDBE *OPTIONAL EXTRAS*

KOD *CODE*

CENTRALNA UGRADNJA-SKLOPKE SA ZAKLJUČAVANJEM
CENTRAL MOUNTING-SWITCHES WITH LOCKING



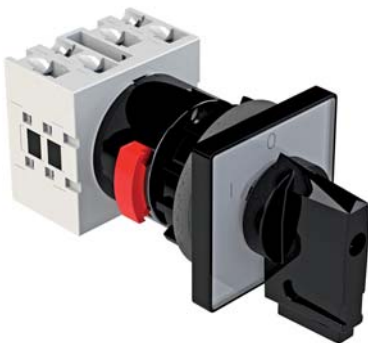
29K

Ugradnja u Ø22 mm.
Utična montaža kontaktnog bloka i prednjeg sklopa.

Mounting into Ø22 mm.
Snap-on mounting of contact block with front part.



GX16 U 29K
GX20 U 29K



41D

Ugradnja u Ø22 mm.
Utična montaža kontaktnog bloka i prednjeg sklopa.

Mounting into Ø22 mm.
Snap-on mounting of contact block with front part.

RUČICA HANDLE	PREDNJA PLOČA FRONT PLATE	PODLOGA ESCUATCH. PLATE	Y KOD / CODE
crna/black	crna/black	bijela/white	
siva/grey	siva/grey	bijela/white	20
crvena-žuta/ red-yellow	žuta/yellow	žuta/yellow	40

GX16 U 41D
GX20 U 41D

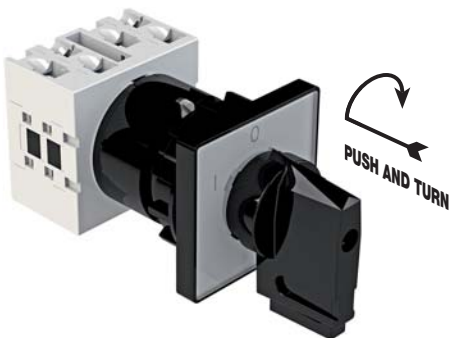


41K

Ugradnja u Ø22 mm.
Utična montaža kontaktnog bloka i prednjeg sklopa.

Mounting into Ø22 mm.
Snap-on mounting of contact block with front part.

GX16 U 41K
GX20 U 41K



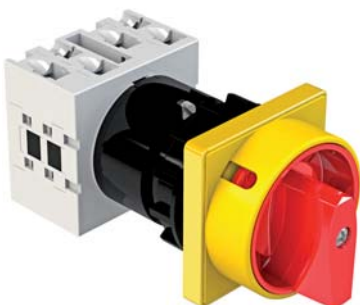
**71
72**

Brza montaža u Ø22 mm (izvedba 71) odnosno u Ø30 mm (izvedba 72). Zaključavanje (1 - 3 lokota) u "0".

Quick mounting into Ø22 mm (optional extra 71) or into Ø30 mm (optional extra 72). Padlocking (1 - 3) in "0".

RUČICA HANDLE	PREDNJA PLOČA FRONT PLATE	PODLOGA ESCUATCH. PLATE	Y KOD / CODE
crna/black	crna/black	bijela/white	
siva/grey	siva/grey	bijela/white	20
crvena-žuta/ red-yellow	žuta/yellow	žuta/yellow	40

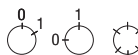
GX16 U 71 / or 72
GX20 U 71 / or 72



**76
77**

Brza montaža u Ø22 mm (izvedba 76) odnosno u Ø30 mm (izvedba 77). Zaključavanje (1 - 3 lokota) u "0".

Quick mounting into Ø22 mm (optional extra 76) or into Ø30 mm (optional extra 77). Padlocking (1 - 3) in "0".

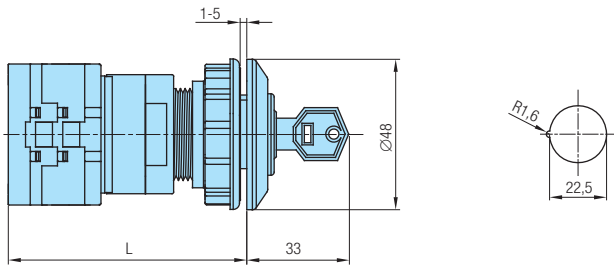


RUČICA HANDLE	ČEONA PLOČA COVER PLATE	PREDNJA PLOČA FRONT PLATE	Y KOD / CODE
crna / black	crna / black	crna / black	
siva / grey	siva / grey	siva / grey	20
crvena / red	žuta / yellow	žuta / yellow	40

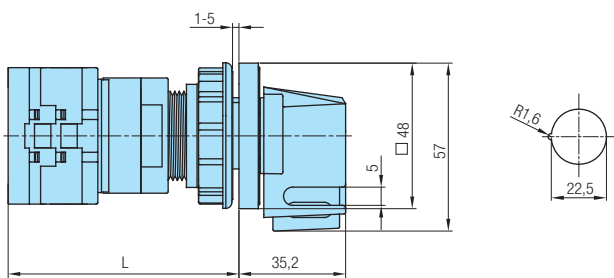
GX16 U 76 / or 77
GX20 U 76 / or 77

MJERNE SKICE *DIMENSIONAL DRAWINGS* (mm)

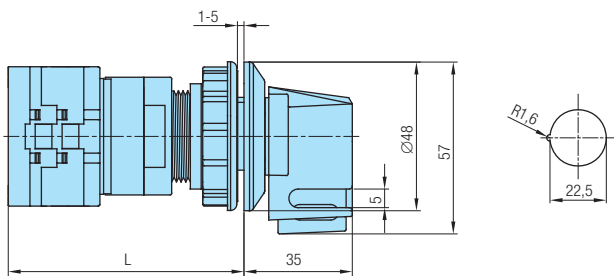
Plan bušenja / *Drilling plan*
Prednji lim / *Front panel*



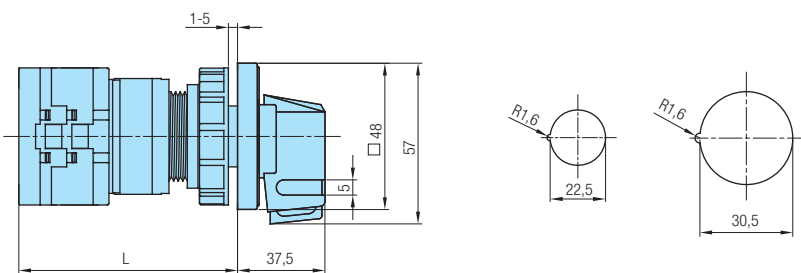
Tip Type	L			
	1	2	3...8	
GX 16	64,9	73,4	81,9	124,4
GX 20	64,9	73,4	81,9	124,4



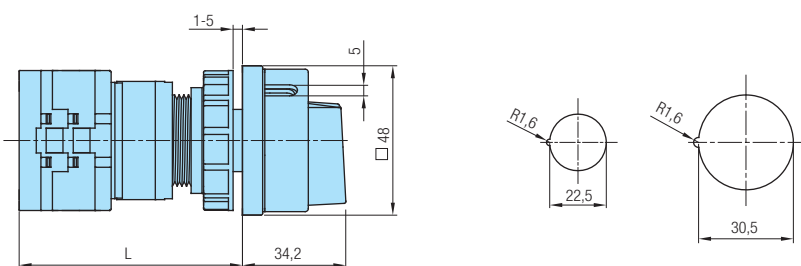
Tip Type	L			
	1	2	3...12	
GX 16	64,9	73,4	81,9	158,4
GX 20	64,9	73,4	81,9	158,4



Tip Type	L			
	1	2	3...12	
GX 16	64,9	73,4	81,9	158,4
GX 20	64,9	73,4	81,9	158,4



Tip Type	L			
	1	2	3...12	
GX 16	59,9	68,4	76,9	153,4
GX 20	59,9	68,4	76,9	153,4



Tip Type	L			
	1	2	3...12	
GX 16	59,9	68,4	76,9	153,4
GX 20	59,9	68,4	76,9	153,4

POSEBNE IZVEDBE *OPTIONAL EXTRAS*

KOD *CODE*

BLOKIRANJE POLOŽAJA-DVORUČNO UPRAVLJANJE
BLOCKADE OF POSITIONS-TWO HANDS OPERATING



16

Blokiranje položaja - dvoručno upravljanje, protiv nehotećnog uklapanja. Blokada moguća u svim položajima (potrebno definirati narudžbom).

Blockade of positions - two hands operating, against an accidental switching-on. Blockade is possible in any position (please define).

GX16H	U	16
GX20H	U	16
GX32	U	16
GX40	U	16



26

Blokiranje položaja - dvoručno upravljanje, protiv nehotećnog uklapanja, te zaključavanje jednim lokotom. Blokada i zaključavanje moguće u svim položajima (potrebno definirati narudžbom).

Blockade of positions - two hands operating, against an accidental switching-on, locking by one padlock. Blockade and locking is possible in any position (please define).

GX16H	U	26
GX20H	U	26
GX32	U	26
GX40	U	26



17

Blokiranje položaja + pomoćni kontakti (tipkalo).
Moguća izvedba s jednim ili dva para uklopno-isklopnih kontakata. Upravljanje kontaktima ostvaruje se prije funkcije sklopke.
Standardno: blokada položaja u "0", pomoćni kontakti 1NO +1NC.
Nestandardnu blokadu položaja i broj pomoćnih kontakata potrebno je definirati narudžbom.

*Blockade of positions + auxiliary contacts (push button).
Possible optional extra with one or two pairs of the open-close contacts.
Operating of the contacts is being realized before switch function.*

Standard: blockade in position "0", auxiliary contacts 1NO +1NC. It is necessary to define blockade of the positions and number of the auxiliary contacts.

GX16H	U	17
GX20H	U	17
GX32	U	17
GX40	U	17



27

Blokiranje položaja + pomoćni kontakti (tipkalo) + zaključavanje jednim lokotom.
Moguća izvedba s jednim ili dva para uklopno-isklopnih kontakata. Upravljanje kontaktima ostvaruje se prije funkcije sklopke.
Standardno: blokada položaja u "0", pomoćni kontakti 1NO +1NC.
Nestandardnu blokadu položaja i broj pomoćnih kontakata potrebno je definirati narudžbom.

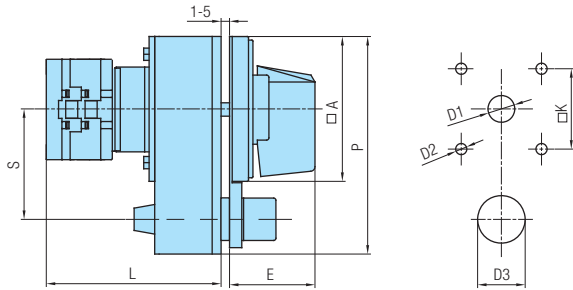
*Blockade of positions + auxiliary contacts (push button) + locking by one padlock.
Possible optional extra with one or two pairs of the open-close contacts.
Operating of the contacts is being realized before switch function.*

Standard: blockade in position "0", auxiliary contacts 1NO +1NC. It is necessary to define blockade of the positions and number of the auxiliary contacts.

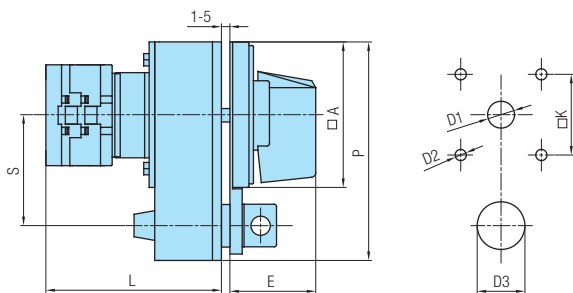
GX16H	U	27
GX20H	U	27
GX32	U	27
GX40	U	27

MJERNE SKICE *DIMENSIONAL DRAWINGS* (mm)

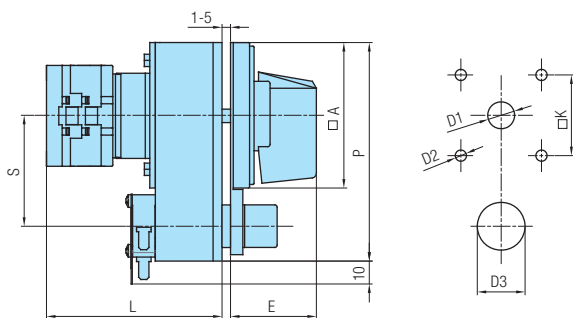
Plan bušenja / *Drilling plan*
Prednji lim / *Front panel*



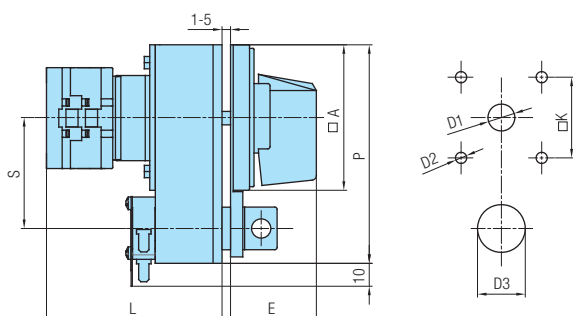
Tip Type	Oznaka / Marking								L			
	□A	D1	D2	D3	E	□K	P	S	1	2	3...12	
GX 16H	65	12	5	20	36	48	65x98	48	70,5	79	87,5	164
GX 20H	65	12	5	20	36	48	65x98	48	70,5	79	87,5	164
GX 32	65	14	5	20	36	48	65x98	48	78	90	102	210
GX 40	65	14	5	20	36	48	65x98	48	78	90	102	210



Tip Type	Oznaka / Marking								L			
	□A	D1	D2	D3	E	□K	P	S	1	2	3...12	
GX 16H	65	12	5	20	36	48	65x98	48	70,5	79	87,5	164
GX 20H	65	12	5	20	36	48	65x98	48	70,5	79	87,5	164
GX 32	65	14	5	20	36	48	65x98	48	78	90	102	210
GX 40	65	14	5	20	36	48	65x98	48	78	90	102	210



Tip Type	Oznaka / Marking								L			
	□A	D1	D2	D3	E	□K	P	S	1	2	3...12	
GX 16H	65	12	5	20	36	48	65x98	48	70,5	79	87,5	164
GX 20H	65	12	5	20	36	48	65x98	48	70,5	79	87,5	164
GX 32	65	14	5	20	36	48	65x98	48	78	90	102	210
GX 40	65	14	5	20	36	48	65x98	48	78	90	102	210



Tip Type	Oznaka / Marking								L			
	□A	D1	D2	D3	E	□K	P	S	1	2	3...12	
GX 16H	65	12	5	20	36	48	65x98	48	70,5	79	87,5	164
GX 20H	65	12	5	20	36	48	65x98	48	70,5	79	87,5	164
GX 32	65	14	5	20	36	48	65x98	48	78	90	102	210
GX 40	65	14	5	20	36	48	65x98	48	78	90	102	210

POSEBNE IZVEDBE *OPTIONAL EXTRAS*

KOD *CODE*

PRODUŽENJE OSOVINE
EXTENSION SHAFT



02

Standardna izvedba podrazumijeva da je P=100 mm. Specijalnom narudžbom potrebno je definirati dubinu ormara (L+P).

Standard version includes the P=100 mm. It is necessary to define board depth (L+P).

GX16	O	02
GX16H	O	02
GX20	O	02
GX20H	O	02
GX32	O	02
GX32H	O	02
GX40	O	02
GX40H	O	02

PRODUŽENJE OSOVINE I SPOJKA ZA VRATA
EXTENSION SHAFT AND DOOR COUPLING

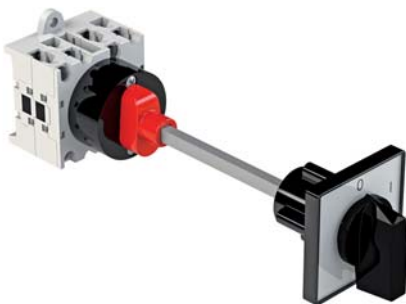


258

Otvaranje vrata u položaju "0". Različita ugradbena dužina.

Door-opening in position "0". Different length for mounting.

GX16	O	258
GX16H	O	258
GX20	O	258
GX20H	O	258
GX32	O	258
GX40	O	258



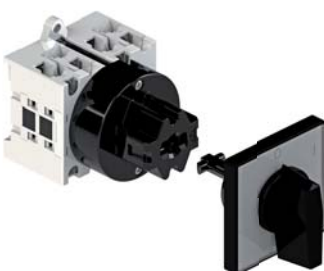
102

Otvaranje vrata u položaju "0". Standardno se isporučuje s osovinom dužine 100 mm.

Door-opening in position "0". Standard version with 100 mm shaft.

KOD / CODE	IZVEDBA / VERSION
102	Standardna izvedba - osovina 100 mm <i>Standard version - shaft 100 mm</i>
102 - 200	Osovina 200 mm <i>Shaft 200 mm</i>

GX16	O	102
GX16H	O	102
GX20	O	102
GX20H	O	102
GX32	O	102
GX40	O	102



108D

Upotreba kod sklopki odvojene ugradnje, omogućava prilagodbu različitim dubinama ugradnje. Otvaranje vrata u položaju "0". Standardno se isporučuje s jednim modulom.

Used to adapt switches with base mounting to different mounting depths. Door opening in position "0". Standard version with one module.

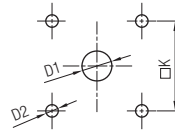
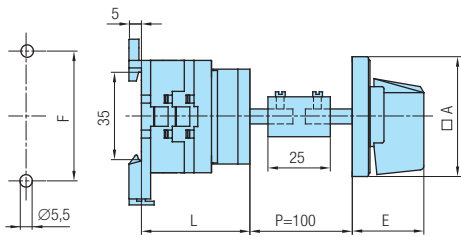
KOD / CODE	IZVEDBA / VERSION
108D	Standardna izvedba s jednim modulom <i>Standard version with one module</i>
108D - 2	Izvedba s dva modula <i>Version with two modules</i>
108D - 3	Izvedba s tri modula <i>Version with three modules</i>
108D - 4	Izvedba s četiri modula <i>Version with four modules</i>

GX16	O	108D
GX16H	O	108D
GX20	O	108D
GX20H	O	108D
GX32	O	108D
GX40	O	108D

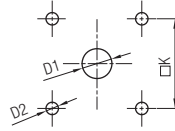
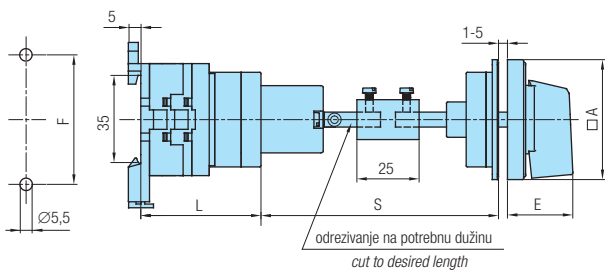
MJERNE SKICE *DIMENSIONAL DRAWINGS* (mm)

Plan bušenja / *Drilling plan*
Stražnji lim / *Rear panel*

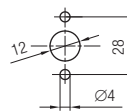
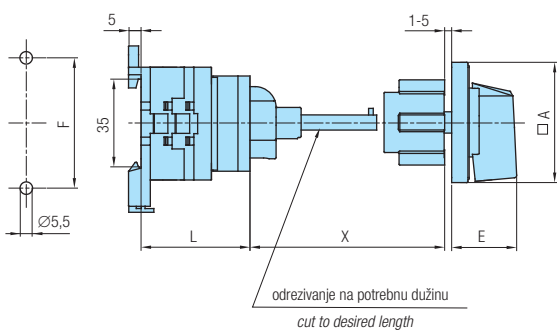
Plan bušenja / *Drilling plan*
Prednji lim / *Front panel*



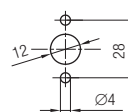
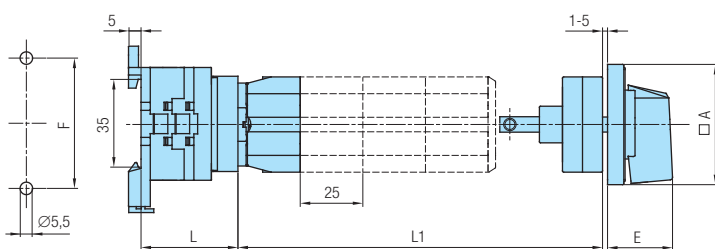
Tip Type	Oznaka / Marking						L			
	□A	D1	D2	E	F	□K	1	2	3...12	
GX 16	48	12	5	26,5	52	36	37	45,5	54	130,5
GX 16H	65	12	5	34,5	52	48	37	45,5	54	130,5
GX 20	48	12	5	26,5	52	36	37	45,5	54	130,5
GX 20H	65	12	5	34,5	52	48	37	45,5	54	130,5
GX 32	65	14	5	34,5	68	48	48	60	72	180
GX 32H	90	14	6	41,5	68	68	48	60	72	180
GX 40	65	14	5	34,5	68	48	48	60	72	180
GX 40H	90	14	6	41,5	68	68	48	60	72	180



Tip Type	Oznaka / Marking						L				
	□A	D1	D2	E	F	□K	S	1	2	3...12	
GX 16	48	12	5	26,5	52	36	45-55	40	48,5	57	133,5
GX 16H	65	12	5	34,5	52	48	45-55	40	48,5	57	133,5
GX 20	48	12	5	26,5	52	36	45-55	40	48,5	57	133,5
GX 20H	65	12	5	34,5	52	48	45-55	40	48,5	57	133,5
GX 32	65	14	5	34,5	68	48	45-55	51	63	75	183
GX 40	65	14	5	34,5	68	48	45-55	51	63	75	183



Tip Type	Oznaka / Marking					L			
	□A	E	F	X 102	X 102-200	1	2	3...12	
GX 16	48	26,5	52	113-122	213-222	37	45,5	54	130,5
GX 16H	65	34,5	52	113-122	213-222	37	45,5	54	130,5
GX 20	48	26,5	52	113-122	213-222	37	45,5	54	130,5
GX 20H	65	34,5	52	113-122	213-222	37	45,5	54	130,5
GX 32	65	34,5	68	113-122	213-222	48	60	72	180
GX 32H	90	41,5	68	133-139	233-239	48	60	72	180
GX 40	65	34,5	68	113-122	213-222	48	60	72	180
GX 40H	90	41,5	68	133-139	233-239	48	60	72	180



Tip Type	Oznaka / Marking			L			
	□A	E	F	1	2	3...12	
GX 16	48	26,5	52	32	40,5	49	125,5
GX 16H	65	34,5	52	32	40,5	49	125,5
GX 20	48	26,5	52	32	40,5	49	125,5
GX 20H	65	34,5	52	32	40,5	49	125,5
GX 32	65	34,5	68	43	55	67	175
GX 40	65	34,5	68	43	55	67	175

Broj modula / Number of modules	L1	
	min	max
1	55	65
2	80	90
3	105	115
4	130	140

POSEBNE IZVEDBE *OPTIONAL EXTRAS*

KOD *CODE*

INSTALACIONA KAPA
SERVICE COVER



48
48D

Instalaciona kapa i ručica za standardnu ugradnju u 45 mm. Podešavanje dužine L (izvedba 48). Fiksna dužina L (izvedba 48D).

Both the service cover (45 mm) and handle are adjustable in height (optional extra 48). Fixed measure L (optional extra 48D).

RUČICA HANDLE	Y KOD / CODE
crna/black	
crvena/red	40

49

Montaža na šinu 35 EN 50022 s instalacionom kapom i ključem za standardnu ugradnju u 45 mm.

Snap on base mounting for the rail 35 EN 50022. Both the service cover (45 mm) and key are adjustable in height.

GX16	O	48
GX20	O	48
GX16	O	48D
GX20	O	48D
GX16	O	49
GX20	O	49

NESTANDARDNA MONTAŽA
NON-STANDARD MOUNTING



38D
38T

Montaža sa dva vijka M4, na razmaku 28 mm (izvedba 38D) odnosno na razmaku 30 mm (izvedba 38T), bez prednje ploče.

Mounting by two screws M4, at a distance 28 mm (optional extra 38D) or at a distance 30 mm (optional extra 38T), without front plate.

39D
39T

Montaža sa dva vijka M4, na razmaku 28 mm (izvedba 39D) odnosno na razmaku 30 mm (izvedba 39T), s prednjom pločom.

Mounting by two screws M4, at a distance 28 mm (optional extra 39D) or at a distance 30 mm (optional extra 39T), with front plate.

31

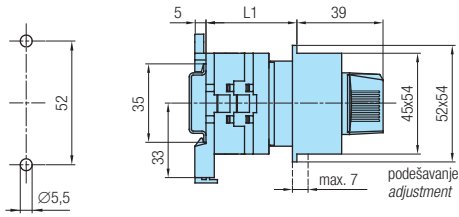
Montaža s četiri umetnute matice M4.

Mounting by four inserted nuts M4.

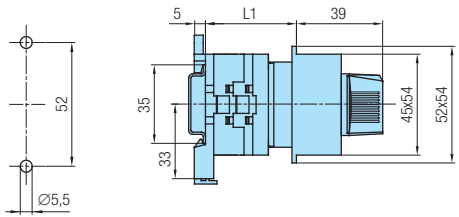
GX16	U	38D	38T
GX20	U	38D	38T
GX32	U	38D	-
GX40	U	38D	-
GX16	U	39D	39T
GX16H	U	39D	-
GX20	U	39D	39T
GX20H	U	39D	-
GX32	U	39D	-
GX32H	U	39D	-
GX40	U	39D	-
GX16	U	31	
GX16H	U	31	
GX20	U	31	
GX20H	U	31	
GX32	U	31	
GX32H	U	31	
GX40	U	31	
GX40H	U	31	

MJERNE SKICE *DIMENSIONAL DRAWINGS* (mm)

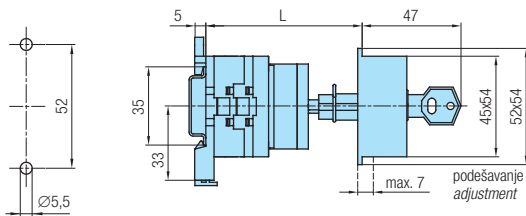
Plan bušenja / *Drilling plan*
Prednji lim / *Front panel*



Tip Type	L		
	1	2	3
GX 16	39,5-46,5	48-55	56,5-63,5
GX 20	39,5-46,5	48-55	56,5-63,5

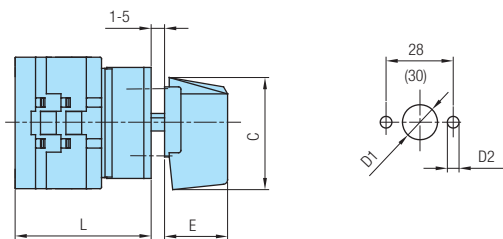


Tip Type	L		
	1	2	3
GX 16	33	41,5	50
GX 20	33	41,5	50

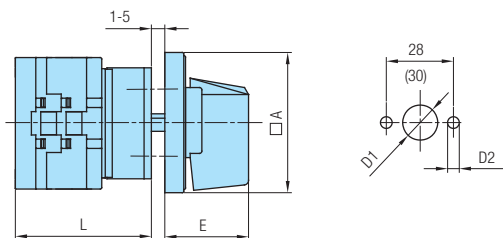


Tip Type	L		
	1	2	3
GX 16	57,5-64,5	66-73	74,5-81,5
GX 20	57,5-64,5	66-73	74,5-81,5

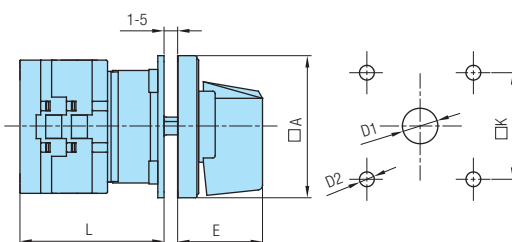
Plan bušenja / *Drilling plan*
Prednji lim / *Front panel*



Tip Type	L											
	C	D1	D2	E	1	2	3	4	5	6	7	8
GX 16	39,5	12	5	19	43	51,5	60	68,5	77	85,5	94	102,5
GX 20	39,5	14	5	19	43	51,5	60	68,5	77	85,5	94	102,5
GX 32	53	14	5	25	50,5	62,5	74,5	86,5	98,5	110,5	-	-
GX 40	53	14	5	25	50,5	62,5	74,5	86,5	98,5	110,5	-	-



Tip Type	Oznaka / Marking											
	□A	D1	D2	E	1	2	3	4	5	6	7	8
GX 16	48	12	5	26,5	43	51,5	60	68,5	77	85,5	94	102,5
GX 16H	65	12	5	34,5	43,5	52	60,5	69	77,5	86	94,5	103
GX 20	48	12	5	26,5	43	51,5	60	68,5	77	85,5	94	102,5
GX 20H	65	12	5	34,5	43,5	52	60,5	69	77,5	86	94,5	103
GX 32	65	14	5	34,5	50,5	62,5	74,5	86,5	98,5	110,5	-	-
GX 40	65	14	5	34,5	50,5	62,5	74,5	86,5	98,5	110,5	-	-



Tip Type	Oznaka / Marking							
	□A	D1	D2	E	□K	1	2	
GX 16	48	12	5	26,5	36	40	48,5	
GX 16H	65	12	5	34,5	48	40,5	49	
GX 20	48	12	5	26,5	36	40	48,5	
GX 20H	65	12	5	34,5	48	40,5	49	
GX 32	65	14	5	34,5	48	48	60	
GX 32H	90	14	6	41,5	68	50	62	
GX 40	65	14	5	34,5	48	48	60	
GX 40H	90	14	6	41,5	68	50	62	

POSEBNE IZVEDBE *OPTIONAL EXTRAS*

KOD *CODE*

SIGNALNE SVJETILJKE
SIGNAL LAMPS



15

Standardno se ugrađuje crvena svjetiljka (230V), desno dolje. Mogući naponi 110; 400 V kao i zelena boja svjetiljke (potrebno definirati). Na poseban zahtjev ugrađujemo i drugu svjetiljku lijevo dolje.

In a standard manner, the red lamp (230 V) is built in the right bottom corner. Possible voltages are 110; 400 V and green lamp, too (please define). On special request second lamp can be built in the left bottom corner.

GX16	U	15
GX16H	U	15
GX20	U	15
GX20H	U	15
GX32	U	15
GX40	U	15

GX16	O	15
GX16H	O	15
GX20	O	15
GX20H	O	15
GX32	O	15
GX40	O	15

BLOKIRANJE SMJERA OKRETANJA
BLOCKADE OF THE ROTATION DIRECTION



28

Blokiranje lijevog smjera okretanja.

The left direction is blocked.

GX16	U	28
GX16H	U	28
GX20	U	28
GX20H	U	28
GX32	U	28
GX32H	U	28
GX40	U	28
GX40H	U	28

GX16	O	28
GX16H	O	28
GX20	O	28
GX20H	O	28
GX32	O	28
GX32H	O	28
GX40	O	28
GX40H	O	28

GLAVNA SKLOPKA
MAIN SWITCH
GLAVNA SKLOPKA UJEDNO I SKLOPKA ZA NUŽNO ISKLAPANJE
MAIN SWITCH WITH EMERGENCY



21
22

Zaključavanje kličem samo u "0".
Zaštita od slučajnog dodira dovodnih priključnih stezaljki pod naponom.
Kut zakreta 60° i 90°.

*Locking by means of the key only in "0".
Protection against an accidental contact with the supplying terminals under voltage.
Switching angle 60° and 90°.*



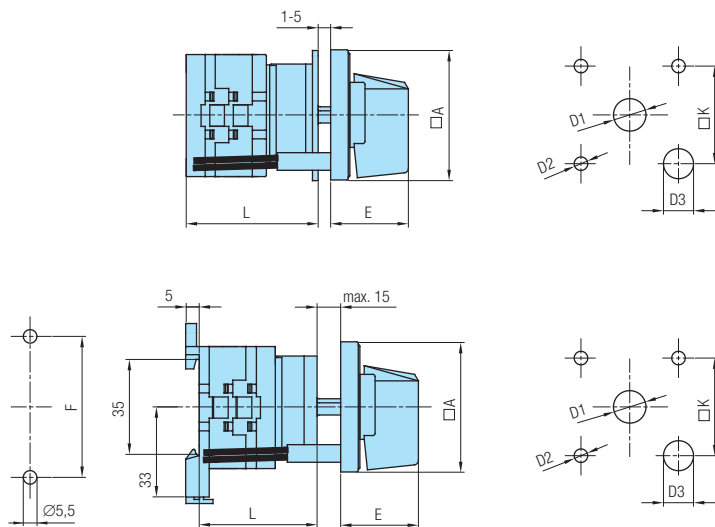
GX16H	U	21	22
GX20H	U	21	22
GX32	U	21	22
GX40	U	21	22

iii / or

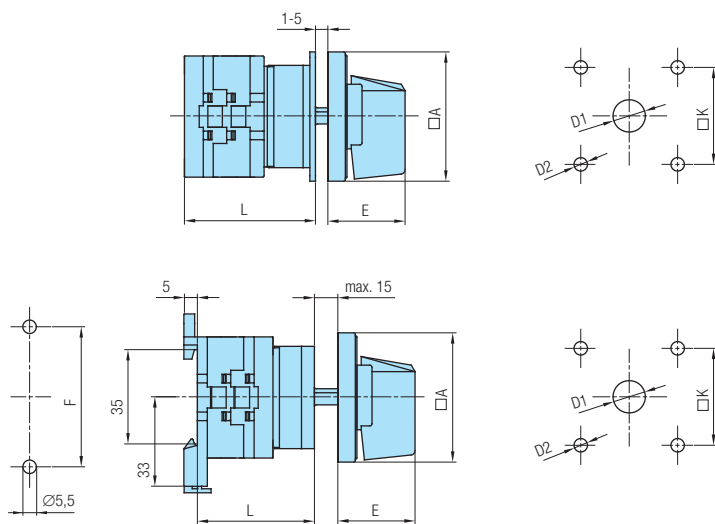
MJERNE SKICE *DIMENSIONAL DRAWINGS* (mm)

Plan bušenja / *Drilling plan*
Stražnji lim / *Rear panel*

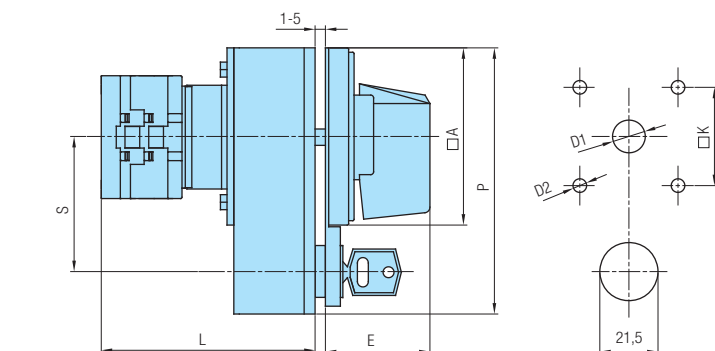
Plan bušenja / *Drilling plan*
Prednji lim / *Front panel*



Tip Type	Oznaka / Marking						L			
	A	D1	D2	D3	E	K	1	2	3...12	
GX 16	48	12	5	6,5	26,5	36	40	48,5	57	133,5
GX 16H	65	12	5	6,5	34,5	48	40,5	49	57,5	134
GX 20	48	12	5	6,5	26,5	36	40	48,5	57	133,5
GX 20H	65	12	5	6,5	34,5	48	40,5	49	57,5	134
GX 32	65	14	5	6,5	34,5	48	48	60	72	180
GX 40	65	14	5	6,5	34,5	48	48	60	72	180



Tip Type	Oznaka / Marking						L			
	A	D1	D2	E	F	K	1	2	3...12	
GX 16	48	12	5	26,5	52	36	40	48,5	57	133,5
GX 16H	65	12	5	34,5	48	48	40,5	49	57,5	134
GX 20	48	12	5	26,5	52	36	40	48,5	57	133,5
GX 20H	65	12	5	34,5	48	48	40,5	49	57,5	134
GX 32	65	14	5	34,5	68	48	48	60	72	180
GX 32H	90	14	6	41,5	68	68	50	62	74	182
GX 40	65	14	5	34,5	68	48	48	60	72	180
GX 40H	90	14	6	41,5	68	68	50	62	74	182



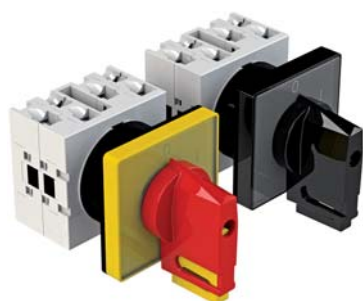
Tip Type	Oznaka / Marking								
	A	D1	D2	E	K	P	S	L	
GX 16H	65	12	5	36	48	65x98	48	70,5	
GX 20H	65	12	5	36	48	65x98	48	70,5	
GX 32	65	14	5	36	48	65x98	48	90	
GX 40	65	14	5	36	48	65x98	48	90	

POSEBNE IZVEDBE *OPTIONAL EXTRAS*

KOD *CODE*

GLAVNA SKLOPKA
MAIN SWITCH

GLAVNA SKLOPKA UJEDNO I SKLOPKA ZA NUŽNO ISKLAPANJE
MAIN SWITCH WITH EMERGENCY



73
75

Zaključavanje (1-3 lokota) samo u "0".
Zaštita od slučajnog dodira dovodnih priključnih stezaljki pod naponom.
Kut zakreta 60° i 90°.

Locking (1-3) only in "0".
Protection against an accidental contact with the supplying terminals under voltage.
Switching angle 60° and 90°.

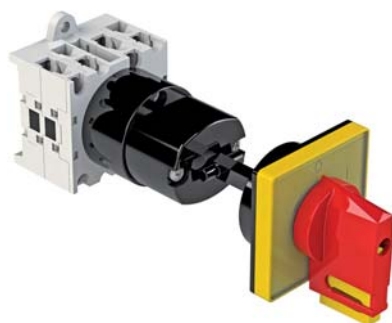


GX16	U	73	75
GX20	U	73	75

GX16	O	73	75
GX20	O	73	75

SPOJKA ZA VRATA
DOOR COUPLING

GLAVNA SKLOPKA UJEDNO I SKLOPKA ZA NUŽNO ISKLAPANJE
MAIN SWITCH WITH EMERGENCY



86

Zaključavanje (1-3 lokota) samo u "0".
Otvaranje vrata samo u "0" položaju.
Zaštita od slučajnog dodira dovodnih priključnih stezaljki pod naponom samo u "0" položaju. Kut zakreta 60° i 90°.
Ukoliko je traženi "S" veći od ponuđenog potrebno je definirati "S" ili dubinu ormara (L+S). Minimalna udaljenost od šarke 150 mm.

Padlocking (1-3) only in "0".
Door-opening only in "0" position.
Protection against an accidental contact with the supplying terminals under voltage only in "0" position. Switching angle 60° and 90°. When required "S" is bigger then offered, it is necessary to define "S" or depth of the board (L+S). Minimal distance to the door-hinge 150 mm.

GX16	O	86	
GX20	O	86	

SPOJKA ZA VRATA
DOOR COUPLING

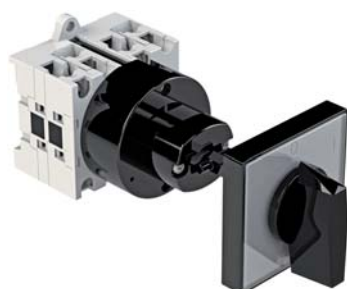


07
08

Otvaranje vrata u bilo kojem položaju (izvedba 07) ili samo u "0" (izvedba 08).
Ukoliko je traženi "S" veći od ponuđenog potrebno je definirati "S" ili dubinu ormara (L+S).
Minimalna udaljenost od šarke 150 mm.

Door-opening in any position (07) or only in "0" (08).
When required "S" is bigger then offered, it is necessary to define "S" or depth of the board (L+S).
Minimal distance to the door-hinge 150 mm.

GX16H	O	07	08
GX16H	O	07	08
GX32	O	07	08
GX32H	O	07	08
GX40	O	07	08
GX40H	O	07	08



57/58
58D

Otvaranje vrata u bilo kojem položaju (izvedba 57) ili samo u "0" (izvedba 58).
Montaža s 4 vijka (izvedbe 57, 58).
Montaža s 2 vijka (izvedba 58D).
Minimalna udaljenost od šarke 150 mm.

Door-opening in any position (57) or only in "0" (58).
Mounting with 4 screws (optional extra 57, 58).
Mounting with 2 screws (optional extra 58D).
Minimal distance to the door-hinge 150 mm.

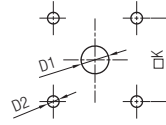
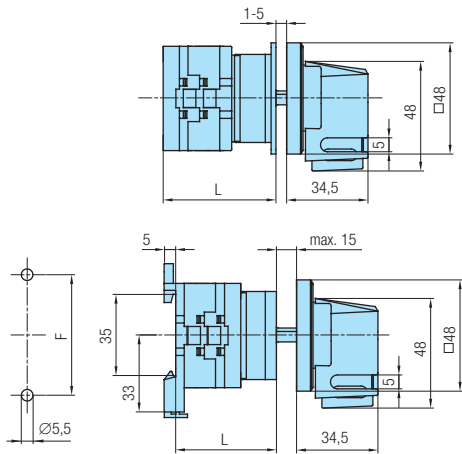
GX16	O	57	58
GX16H	O	57	58
GX20	O	57	58
GX20H	O	57	58
GX32	O	57	58
GX40	O	57	58

GX16	O	58D	
GX16H	O	58D	
GX20	O	58D	
GX20H	O	58D	
GX32	O	58D	
GX40	O	58D	

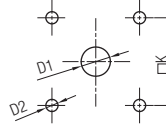
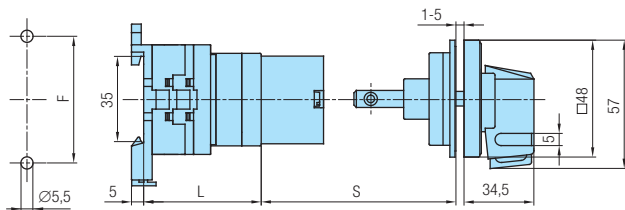
MJERNE SKICE *DIMENSIONAL DRAWINGS* (mm)

Plan bušenja / *Drilling plan*
Stražnji lim / *Rear panel*

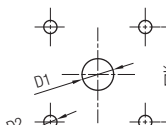
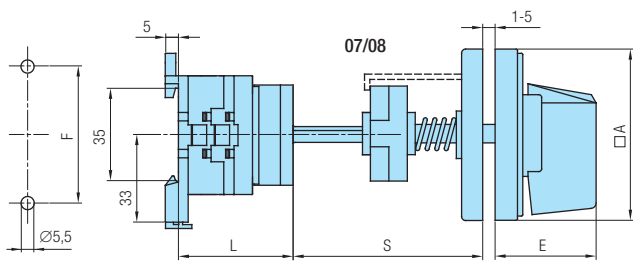
Plan bušenja / *Drilling plan*
Prednji lim / *Front panel*



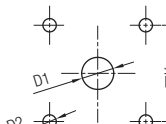
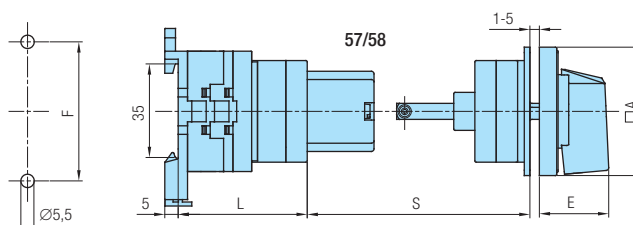
Tip Type	Oznaka / Marking			L			
	D1	D2	□K	1	2	3...12	
GX 16	12	5	36	40	48,5	57	133,5
GX 20	12	5	36	40	48,5	57	133,5



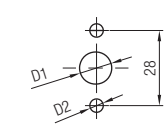
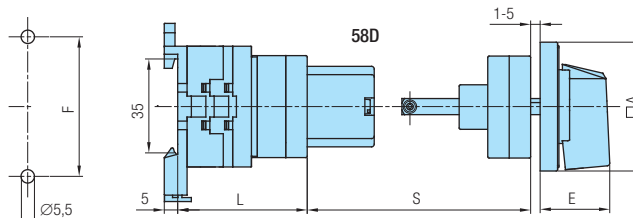
Tip Type	Oznaka / Marking					L			
	D1	D2	F	□K	S	1	2	3...12	
GX 16	12	5	52	36	45-55	40	48,5	57	133,5
GX 20	12	5	52	36	45-55	40	48,5	57	133,5



Tip Type	Oznaka / Marking								L			
	□A	D1	D2	E	F	□K	S	1	2	3...12		
GX 16H	65	12	5	34,5	52	48	60	40	48,5	57	133,5	
GX 20H	65	12	5	34,5	52	48	60	40	48,5	57	133,5	
GX 32	65	14	5	34,5	68	48	64	51	63	75	183	
GX 32H	90	14	6	41,5	68	68	64	51	63	75	183	
GX 40	65	14	5	34,5	68	48	64	51	63	75	183	
GX 40H	90	14	6	41,5	68	68	64	51	63	75	183	



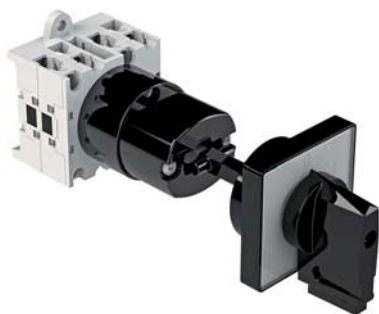
Tip Type	Oznaka / Marking								L			
	□A	D1	D2	E	F	□K	S	1	2	3...12		
GX 16	48	12	5	26,5	52	36	45-55	40	48,5	57	133,5	
GX 16H	65	12	5	34,5	52	48	45-55	40	48,5	57	133,5	
GX 20	48	12	5	26,5	52	36	45-55	40	48,5	57	133,5	
GX 20H	65	12	5	34,5	52	48	45-55	40	48,5	57	133,5	
GX 32	65	14	5	34,5	68	48	45-55	51	63	75	183	
GX 40	65	14	5	34,5	68	48	45-55	51	63	75	183	



POSEBNE IZVEDBE *OPTIONAL EXTRAS*

KOD *CODE*

SPOJKA ZA VRATA
DOOR COUPLING



85

Zaključavanje (1-3 lokota) samo u "0".
Otvaranje vrata samo u "0" položaju.
Ukoliko je traženi "S" veći od ponuđenog potrebno je definirati "S" ili dubinu ormara (L+S).
Minimalna udaljenost od šarke 150 mm.

*Padlocking (1-3) only in "0".
Door-opening only in "0" position.
When required "S" is bigger then offered, it is necessary to define "S" or depth of the board (L+S). Minimal distance to the door-hinge 150 mm.*

RUČICA HANDLE	PODLOGA ESCUTCH. PLATE	PREDNJA PLOČA FRONT PLATE	Y KOD / CODE
crna/black	bijela/white	crna/black	
siva/grey	bijela/white	siva/grey	20

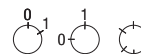
GX16	O	85
GX20	O	85

87
88



Zaključavanje samo u "0".
Otvaranje vrata samo u "0" položaju.
Ukoliko je traženi "S" veći od ponuđenog potrebno je definirati "S" ili dubinu ormara (L+S).
Minimalna udaljenost od šarke 150 mm.
Glavna sklopka ujedno i sklopka za nužno isklapanje (izv. 88).

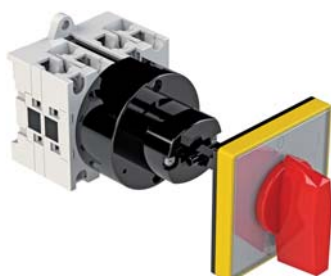
*Padlocking only in "0".
Door-opening only in "0" position.
When required "S" is bigger then offered, it is necessary to define "S" or depth of the board (L+S). Minimal distance to the door-hinge 150 mm.
Main switch with emergency (optional extra 88).*



	RUČICA HANDLE	ČEONA PLOČA COVER PLATE	PREDNJA PLOČA FRONT PLATE	Y KOD / CODE
87	crna / black	crna / black	crna / black	
	siva / grey	siva / grey	siva / grey	20
88	crvena / red	žuta / yellow	žuta / yellow	40

		iii / or
GX16	O	87 88
GX16H	O	87 88
GX20	O	87 88
GX20H	O	87 88
GX32	O	87 88
GX40	O	87 88

84



Otvaranje vrata samo u "0" položaju.
Sklopka sa žutom prednjom pločom, žutom podlogom i crvenom ručicom (1pol. - shema 90; 2pol. - shema 91; 3pol. - shema 10; 4pol. - shema 92). Ukoliko je traženi "S" veći od ponuđenog potrebno je definirati "S" ili dubinu ormara (L+S).
Minimalna udaljenost od šarke 150 mm.

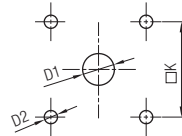
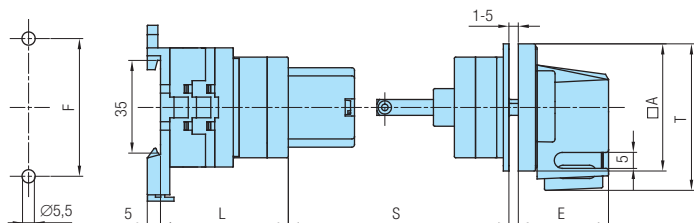
*Door-opening only in "0" position.
Switch with yellow front plate, yellow escutcheon plate and red handle (1-pole: scheme 90; 2-pole: scheme 91; 3-pole: scheme 10; 4-pole: scheme 92). When required "S" is bigger then offered, it is necessary to define "S" or depth of the board (L+S).
Minimal distance to the door-hinge 150 mm.*

GX16	O	84
GX16H	O	84
GX20	O	84
GX20H	O	84
GX32	O	84
GX40	O	84

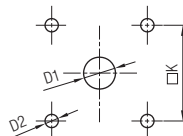
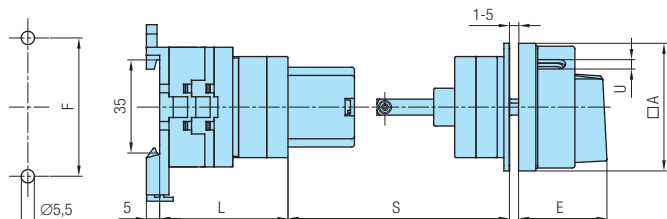
MJERNE SKICE *DIMENSIONAL DRAWINGS* (mm)

Plan bušenja / *Drilling plan*
Stražnji lim / *Rear panel*

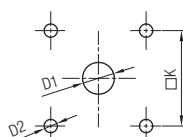
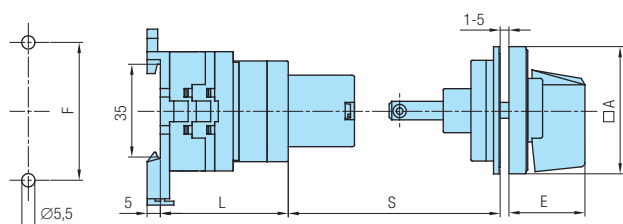
Plan bušenja / *Drilling plan*
Prednji lim / *Front panel*



Tip Type	Oznaka / Marking										L				
	A	D1	D2	E	F	K	S	T	1	2	3...12	1	2	3...12	
GX 16	48	12	5	34,5	52	36	45-55	57	40	48,5	57	133,5			
GX 20	48	12	5	34,5	52	36	45-55	57	40	48,5	57	133,5			



Tip Type	Oznaka / Marking										L				
	A	D1	D2	E	F	K	U	S	1	2	3...12	1	2	3...12	
GX 16	48	12	5	34,2	52	36	5	45-55	40	48,5	57	133,5			
GX 16H	65	12	5	38	52	48	6	45-55	40	48,5	57	133,5			
GX 20	48	12	5	34,2	52	36	5	45-55	40	48,5	57	133,5			
GX 20H	65	12	5	38	52	48	6	45-55	40	48,5	57	133,5			
GX 32	65	14	5	38	68	48	6	45-55	51	63	75	183			
GX 40	65	14	5	38	68	48	6	45-55	51	63	75	183			



Tip Type	Oznaka / Marking										L			
	A	D1	D2	E	F	K	S	1	2	3...12	1	2	3...12	
GX 16	48	12	5	26,5	52	36	45-55	40	48,5	57	133,5			
GX 16H	65	12	5	34,5	52	48	45-55	40	48,5	57	133,5			
GX 20	48	12	5	26,5	52	36	45-55	40	48,5	57	133,5			
GX 20H	65	12	5	34,5	52	48	45-55	40	48,5	57	133,5			
GX 32	65	14	5	34,5	68	48	45-55	51	63	75	183			
GX 40	65	14	5	34,5	68	48	45-55	51	63	75	183			

POSEBNE IZVEDBE *OPTIONAL EXTRAS*

KOD *CODE*

PLASTIČNO KUĆIŠTE
PLASTIC CASING



28

Blokiranje lijevog smjera okretanja.

The left direction is blocked.

GX16	P	28
GX20	P	28
GX32	P	28
GX40	P	28



24

Standardna sklopka sa žutom podlogom i crvenom ručicom (1pol. - shema 90; 2pol. - shema 91; 3pol. - shema 10; 4pol. - shema 92).

Standard switch with yellow escutcheon plate and red handle (1-pole: scheme 90; 2-pole: scheme 91; 3-pole: scheme 10; 4-pole: scheme 92).

GX16	P	24
GX20	P	24
GX32	P	24
GX40	P	24



15

Standardno ugrađena crvena svjetiljka (230 V), desno dolje. Mogući naponi 110, 400 V, te zelena boja svjetiljke (potrebno definirati). Na poseban zahtjev ugrađujemo i drugu svjetiljku lijevo dolje.

In a standard manner, the red lamp (230 V) is built in the right bottom corner. Possible voltages are 110, 400 V and green lamp, too (please define). On special request second lamp can be built in the left bottom corner.

GX16	P	15
GX20	P	15
GX32	P	15
GX40	P	15



06 Zaključavanje samo u "0"
(Vidi str. 10 i 12)

23 Locking only in "0"
25 (See pages 10 and 12)

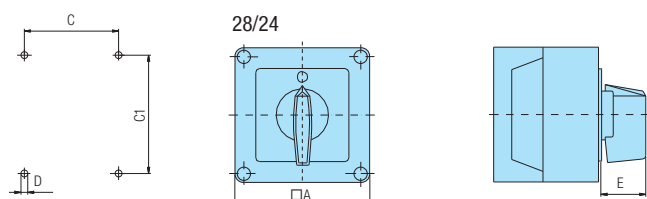
	MOGUĆNOSTI POSSIBILITY	RUČICA HANDLE	ČEONA PLOČA COVER PLATE	KUĆIŠTE CASING
06		siva / grey	siva / grey	sivo / grey
23		crna / black	crna / black	sivo / grey
25		crvena / red	žuta / yellow	sivo / grey

GX16	P	06	23	25
GX20	P	06	23	25
GX32	P	06	23	25
GX40	P	06	23	25

ili / or

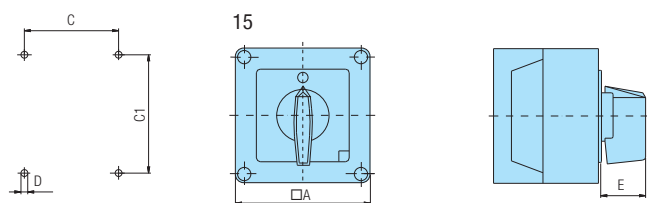
MJERNE SKICE *DIMENSIONAL DRAWINGS* (mm)

Plan bušenja / *Drilling plan*
 Stražnji lim / *Rear panel*



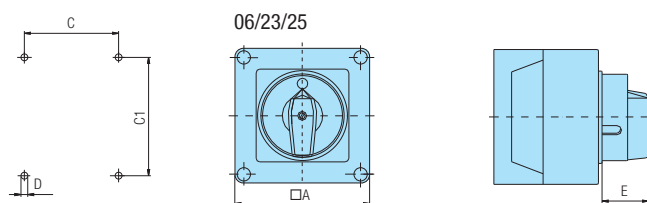
28/24/15

Tip Type	Tip kućišta Casing size	Broj elemenata Number of elements		□A	C	C1	D	E
		L	L1					
GX 16	90x90	1-2	3-5	90	63	79	4,5	25
GX 20								
GX 16	110x110	1-3	4-7	110	83	98,4	4,5	32
GX 20								
GX 32 GX 40		1-2	3-4					





06/23/25

Tip Type	Tip kućišta Casing size	Broj elemenata Number of elements		□A	C	C1	D	E
		L	L1					
GX 16	90x90	1-2	3-5	90	63	79	4,5	28
GX 20								
GX 16	110x110	1-3	4-7	110	83	98,4	4,5	38,5
GX 20								
GX 32 GX 40		1-2	3-4					



REZERVNI DIJELOVI *ACCESSORIES*

RUČICE *HANDLES*

		NARUŽBENI KOD / <i>ORDERING CODE</i>				
		Veličina / <i>Size</i>				
	Boja / <i>Colour</i>	A0	A1		A2	
	siva / <i>grey</i>	R011-6	R111-6	R111-7	R211-6	R211-7
	crvena / <i>red</i>	R012-6	R112-6	R112-7	R212-6	R212-7
	crna / <i>black</i>	R014-6	R114-6	R114-7	R214-6	R214-7
	žuta / <i>yellow</i>	R015-6	R115-6	R115-7	R215-6	R215-7
	siva / <i>grey</i>		R121-6	R121-7	R221-6	R221-7
	crvena / <i>red</i>		R122-6	R122-7	R222-6	R222-7
	crna / <i>black</i>		R124-6	R124-7	R224-6	R224-7
	žuta / <i>yellow</i>		R125-6	R125-7	R225-6	R225-7

Zadnji broj u kodu ručice (6, 7, 8 ili 9) označava kvadrat osovine na koju se ručica montira (kota □N na mjernoj skici na strani 5).
Last number in ordering code (6, 7, 8 or 9) means the shaft square required for requested handle (dimension □N from dim. drawing on page 5).
 ■ - standardna ručica za određenu ugradnu veličinu / *standard handle for defined mounting size*

PREDNJE PLOČE *FRONT PLATES*



Prednja ploča standardnog oblika. Moguća za sve veličine (A0, A1, A2).
 Izrađuje se standardno u crnoj boji, a prema narudžbi u sivoj i žutoj.
 Standardne podloge prednjih ploča vidi na stranicama 38-40.

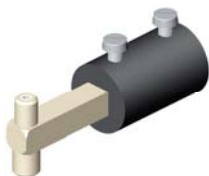
*Front plate - standard form. Available at all sizes (A0, A1, A2).
 In a standard manner it is being produced in black colour; grey and yellow colour available on request.
 Standard escutcheon plates of front plates see on pages 38-40.*



Prednja ploča s natpisom. Moguća za sve veličine (A0, A1, A2).
 Izrađuje se standardno u crnoj boji, a prema narudžbi u sivoj i žutoj.
 Standardne podloge prednjih ploča vidi na stranicama 38-40.

*Front plate with title. Available at all sizes (A0, A1, A2).
 In a standard manner it is being produced in black colour; grey and yellow colour available on request.
 Standard escutcheon plates of front plates see on pages 38-40.*

PRODUŽENA OSOVINA *EXTENDED SHAFT*



Spojka za vrata s mogućnošću podešavanja dužine osovine, 70 mm max.

Adjustable door - coupling extension shaft, 70 mm length max.

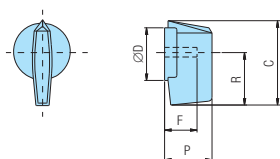
MODUL ZA SPECIJALNU IZVEDBU "108D" *MODUL FOR OPTIONAL EXTRA "108D"*



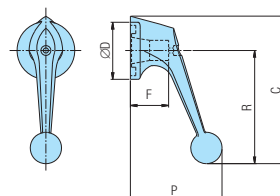
OSOVINA ZA SPECIJALNU IZVEDBU "102" *SHAFT FOR OPTIONAL EXTRA "102"*



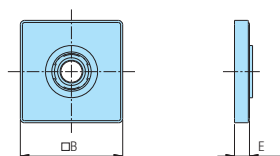
MJERNE SKICE *DIMENSIONAL DRAWINGS* (mm)



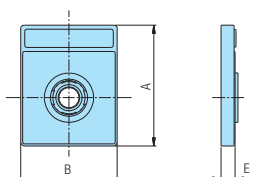
Veličina Size	ØD	F	C	P	R
A0	27,5	16	39,5	19	23,5
A1	35	20	53	25	32
A2	48	26,5	70,5	32	43,5



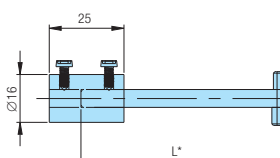
Veličina Size	ØD	F	C	P	R
A1	35	23	81,5	52	61,5
A2	48	26,5	105,5	65	79,5



Veličina Size	Oznaka / Marking	
	□B	E
A0	48	7,5
A1	65	9,5
A2	90	9,5



Veličina Size	Oznaka / Marking		
	A	B	E
A0	60	48	7,5
A1	80,5	65	9,5
A2	110	90	9,5



L	Narudžbeni kod Ordering code
70	B85992
150	B85893
200	B85894

* Dužinu skratiti po potrebi

* Possible to cut desired length

Modul 108D	Narudžbeni kod Ordering code
	B71717

L	Izvedba Option	Narudžbeni kod Ordering code
100	102	B71840
200	102-200	B71841

REZERVNI DIJELOVI ACCESSORIES

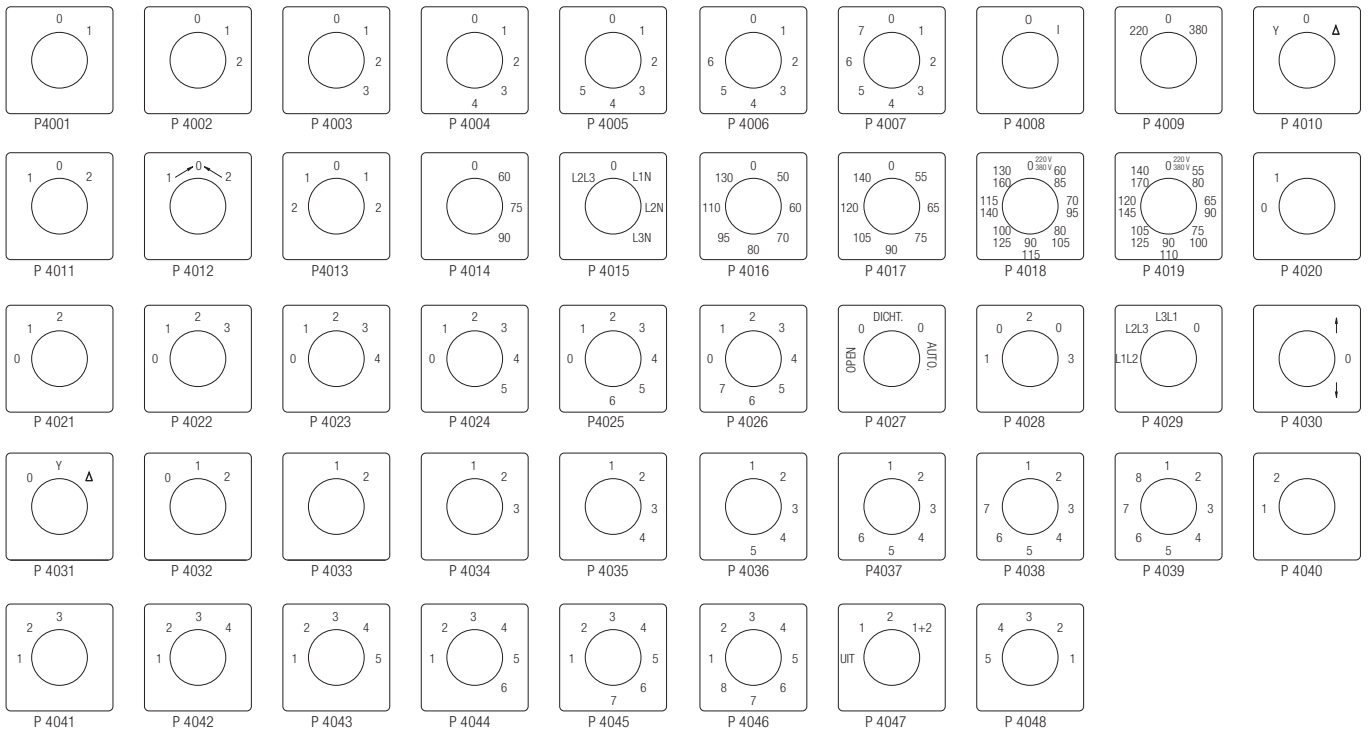
PODLOGA "N" ESCUTCHEON PLATE "N"

GLAVNA SKLOPKA N 01	MAIN SWITCH N 02	HAUPTSCHALTER N 03	NUŽNO ISKLAPANJE N 04	EMERGENCY OFF N 05	NOT-AUS N 06	VOLTMETAR N 07	VOLTMETER N 08	AMPERMETAR N 09	AMMETER N 10
AMPERMETAR N 11	VOLTM.-AMPERM. N 12	VOLTMETER-AMMETER N 13	MOTOR N 14	MOTOR CONTROL N 15	PUMPA N 16	PUMP N 17	PUMPE N 18	GRIJANJE N 19	HEIZUNG N 20
HLADENJE N 21	VENTILATOR N 22	RASVJETA N 23	BIRAČ N 24	WAHLSCHALTER N 25	SELECTOR N 26	REGULACIJA BRZINE N 27	SPEED CONTROL N 28	SINKRONIZACIJA N 29	SYNCHRONIZING N 30
<div style="border: 1px solid black; width: 100px; height: 15px; margin-bottom: 5px;"></div> N 31									

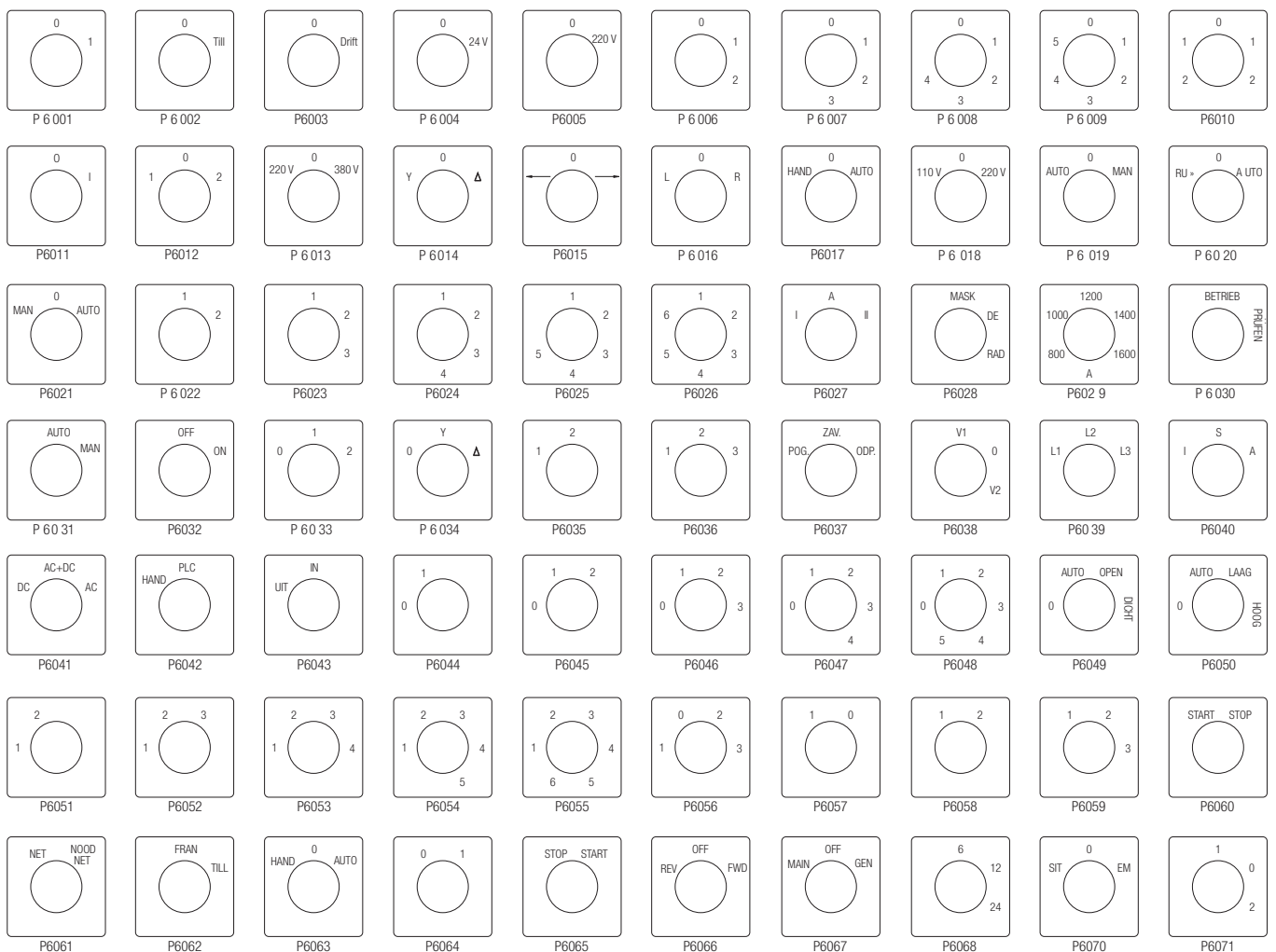
30° KUT ZAKRETA SWITCHING

PODLOGE *ESCUTCHEON PLATES*

45° KUT ZAKRETA *SWITCHING*



60° KUT ZAKRETA *SWITCHING*



PODLOGE *ESCUTCHEON PLATES*

90° KUT ZAKRETA *SWITCHING*

RAZLIČITI KUTEVI ZAKRETA *MISCELLANEOUS SWITCHING*

PREGLED POSEBNIH IZVEDBI PO STRANICAMA *OPTIONAL EXTRAS - REVIEW*

POSEBNA IZVEDBA <i>OPTIONAL EXTRA</i>	Stranica <i>Page</i>	Prednja ploča s natpisom <i>Front plate with title (N)</i>	Mogućnost kombinacije posebnih izvedbi <i>Possible optional extra combinations</i>				
			+39D		+51		
			A0	A1	A0	A1	A2
02	24	+			+	+	+
05	14	+					
06	12	+	+	+	+	+	+
06D	12						
07	30	+			+	+	+
08	30	+			+	+	+
09	14						
10	18						
11	14						
12	18						
13	14	+					
15	28	+	+	+			
16	22	+					
17	22	+					
20	16						
21	28	+					
22	28	+					
23	10	+	+	+	+	+	
24	10	+	+	+	+	+	+
25	10	+	+	+	+	+	
26	22	+					
27	22	+					
28	28	+	+	+	+	+	+
29	18						
29D	18						
29K	20						
30	18						
31	26						
36	16						
37	16						
38D	26						

POSEBNA IZVEDBA <i>OPTIONAL EXTRA</i>	Stranica <i>Page</i>	Prednja ploča s natpisom <i>Front plate with title (N)</i>	Mogućnost kombinacije posebnih izvedbi <i>Possible optional extra combinations</i>				
			+39D		+51		
			A0	A1	A0	A1	A2
38T	26						
39D	26				+	+	
39T	26						
41	18						
41D	20						
41K	20						
42	18	+		+		+	
47	16						
48	26						
48D	26						
49	26						
51	10	+	+	+			
56	12	+	+	+			
57	30	+	+	+	+	+	
58	30	+				+	+
58D	30	+				+	+
67	16						
71	20						
72	20						
73	30	+		+		+	
75	30	+		+		+	
76	20						
77	20						
84	32	+		+	+	+	+
85	32	+		+		+	
86	30	+		+		+	
87	32	+		+	+	+	+
88	32	+		+	+	+	+
102	24	+				+	+
108D	24	+				+	+
258	24	+	+	+	+	+	+

39D - montaža sklopke s 2 vijka / *switch mounting with 2 screws*

51 - stupanj zaštite IP65 / *protection degree IP65*

 - sadržano u toj posebnoj izvedbi / *included in this optional extra*

Borongajska cesta 81b, 10002 Zagreb, Croatia
Tel.: +385 (0)1 2369 201, 2369 243
Fax: +385 (0)1 2395 659, 2318 918
E-mail: prodaja@koncar-nsp.hr, export@koncar-nsp.hr
www.koncar-nsp.hr

Pridržavamo pravo promjene podataka. Ostale podatke dajemo na upit.
We keep the right to change the data. Other data are given on request.

74052(1,2)
XI 15 10